

American Fuses Form 600 A2Y, A6Y

FORM 600 FUSES

Ferraz Shawmut Form 600 fuses were the original current-limiting fuses, pre-dating all the standards. Their 500V DC rating (through 600A) is a useful feature for special applications. Form 600 fuses provide a high degree of current limitation in AC and DC applications. Types 1 and 3 are dimensionally interchangeable with Class H and K fuses. Types 4 and 5 have unique rejection dimensions and are not interchangeable.

Ratings

- AC: A2Y 1-600A
250VAC, 200kA I.R.
A6Y 10-8A
500VAC, 200kA I.R.
A6Y 10-1200A
600VAC, 200kA I.R.
- DC: A2Y 1-600A
500VDC, 100kA I.R.
A6Y 1-8A
500VDC, 100kA I.R.
A6Y 10-600A
500VDC, 100kA I.R.

Approvals

- AC: Guide No. JFHR2 (1-600A)
- DC Tested to UL198L Parameters (1-600A)
- UL Recognized Component File E60314

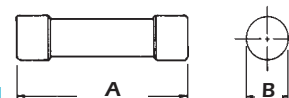


A2Y –Standard Fuse Ampere Ratings, Reference Numbers

Ampere Rating	Cat. Number	Ref. Number	Ampere Rating	Cat. Number	Ref. Number	Ampere Rating	Cat. Number	Ref. Number	Ampere Rating	Cat. Number	Ref. Number	Ampere Rating	Cat. Number	Ref. Number
1	A2Y1-1	W222613	30	A2Y30-1	N213268	80	A2Y80-4	F218367	175	A2Y175-4	B212751	400	A2Y400-4	B219927
2	A2Y2-1	P201976	35	A2Y35-1	E213766	90	A2Y90-3	H219404	200	A2Y200-3	L213266	450	A2Y450-3	V222612
3	A2Y3-1	P212234	40	A2Y40-1	N214280	90	A2Y90-4	C219928	200	A2Y200-4	D213765	450	A2Y450-4	J223131
5	A2Y5-1	R215295	45	A2Y45-1	N214786	100	A2Y100-3	S218884	250	A2Y250-3	Q215294	500	A2Y500-3	R200920
6	A2Y6-1	Y216313	50	A2Y50-1	T215803	100	A2Y100-4	F219402	250	A2Y250-4	S215802	500	A2Y500-4	E201461
8	A2Y8-1	G218368	60	A2Y60-1	B216822	125	A2Y125-3	Q200919	300	A2Y300-3	A216821	500	A2Y500-5	N201975
10	A2Y10-1	K223132	70	A2Y70-3	C212752	125	A2Y125-4	D201460	300	A2Y300-4	R217342	600	A2Y600-3	P211199
15	A2Y15-1	F201462	70	A2Y70-4	M213267	150	A2Y150-3	M201974	350	A2Y350-3	W217852	600	A2Y600-4	F211720
20	A2Y20-1	Q211200	70	A2Y70-5	M214279	150	A2Y150-4	N211198	350	A2Y350-4	T218885	600	A2Y600-5	N212233
25	A2Y25-1	G211721	80	A2Y80-3	X217853	175	A2Y175-3	M212232	400	A2Y400-3	G219403			

A6Y –Standard Fuse Ampere Ratings, Reference Numbers

Ampere Rating	Cat. Number	Ref. Number	Ampere Rating	Cat. Number	Ref. Number	Ampere Rating	Cat. Number	Ref. Number	Ampere Rating	Cat. Number	Ref. Number
1	A6Y1-1	H216828	70	A6Y70-4	J212758	200	A6Y200-4	N223135	450	A6Y450-4	X215300
2	A6Y2-1	Z200927	80	A6Y80-3	L213772	200	A6Y200-5	W200924	450	A6Y450-5	Z215808
3	A6Y3-1	W214793	80	A6Y80-4	V214286	225	A6Y225-3	V211204	500	A6Y500-3	X217347
5	A6Y5-1	R219412	90	A6Y90-3	A215809	225	A6Y225-4	T212238	500	A6Y500-4	M218373
6	A6Y6-1	A200928	90	A6Y90-3	A215809	225	A6Y225-5	G212756	500	A6Y500-5	B218892
8	A6Y8-1	Q211729	100	A6Y100-4	Z222616	250	A6Y250-3	S213272	600	A6Y600-3	Q223137
10	A6Y10-1	N218374	100	A6Y100-3	F219931	250	A6Y250-4	S214284	600	A6Y600-4	L201467
15	A6Y15-1	K219935	125	A6Y125-4	F212755	250	A6Y250-5	S214790	600	A6Y600-5	W201982
20	A6Y20-1	Y211207	125	A6Y125-3	S212237	300	A6Y300-3	Y215807	650	A6Y650-4	X211206
25	A6Y25-1	W213275	125	A6Y125-5	R213271	300	A6Y300-4	F216826	650	A6Y650-4	X211206
30	A6Y30-1	F216320	150	A6Y150-3	R214283	300	A6Y300-5	W217346	800	A6Y800-4	V214792
35	A6Y35-1	F217861	150	A6Y150-4	R214789	350	A6Y350-3	A218891	800	A6Y800-5	Y215301
40	A6Y40-1	P218375	150	A6Y150-5	V215298	350	A6Y350-4	H219933	1000	A6Y1000-4	M223134
45	A6Y45-1	D218894	175	A6Y175-3	B217857	400	A6Y400-3	W211205	1000	A6Y1000-5	V200923
50	A6Y50-1	S223139	175	A6Y175-4	K218371	400	A6Y400-4	V212239	1200	A6Y1200-4	T211203
60	A6Y60-1	Z211208	175	A6Y175-5	Z218890	400	A6Y400-5	H212757	1200	A6Y1200-5	K211724
70	A6Y70-3	W212240	200	A6Y200-3	A222617	450	A6Y450-3	T214791			



Type 1, 1-60 Amperes Class K

Dimensions

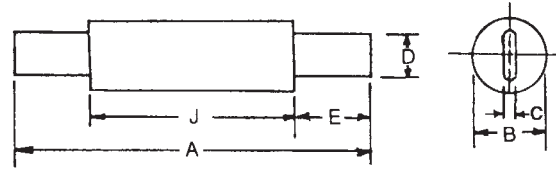
Ampere Rating	Inches	
	A	B
A2Y - 1-60A		
1-30	2	9/16
35-60	3	13/16
A6Y - 1-60A		
1-30	5	13/16
35-60	5-1/2	1-1/16

Special Purpose Fuses

American Fuses Form 600 A2Y, A6Y

Type 3, 70-600 Amperes, Class K - Dimensions

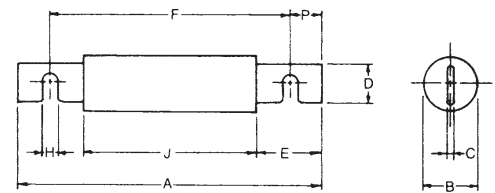
Ampere Rating	Inches					
	A	B	C	D	E	J
250 VAC/500 VDC - A2Y (Amp) - 3						
70-100	5-7/8	1	1/8	23/32	1-5/8	2-21/32
125-200	7-1/8	1-1/2	3/16	1-1/8	2-3/16	2-25/32
225-400	8-5/8	2	1/4	1-5/8	2-15/16	2-25/32
450-600	10-3/8	2-1/2	1/4	2	3-13/16	2-25/32
600 VAC/500 VDC - A6Y (Amp) - 3						
70-100	7-7/8	1	1/8	23/32	2-5/8	2-21/32
110-200	9-5/8	1-1/2	3/16	1-1/8	3-7/16	2-25/32
225-400	11-5/8	2	1/4	1-5/8	4-7/16	2-25/32
450-600	13-3/8	2-1/2	1/4	2	5-5/16	2-25/32



Type 3 70-600A

Type 4, 70-600 Amperes - Dimensions

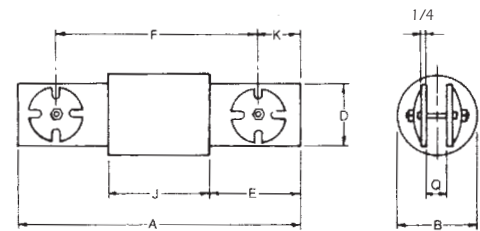
Ampere Rating	Inches								
	A	B	C	D	E	F	H	J	P
250 VAC/500 VDC - A2Y (Amp) - 4									
70-100	5-7/8	1	1/8	23/32	1-5/8	4-7/8	13/64	2-21/32	1/2
125-200	7-1/8	1-1/2	3/16	1-1/8	2-3/16	5-3/4	17/64	2-25/32	11/16
225-400	8-5/8	2	1/4	1-5/8	2-15/16	6-3/4	21/64	2-25/32	15/16
450-600	10-3/8	2-1/2	1/4	2	3-13/16	8-1/8	25/64	2-25/32	1-1/8
600 VAC/500 VDC - A6Y (Amp) - 4									
70-100	7-7/8	1	1/8	23/32	2-5/8	6-7/8	13/64	2-21/32	1/2
125-200	9-5/8	1-1/2	3/16	1-1/8	3-7/16	8-1/4	17/64	2-25/32	11/16
225-400	11-5/8	2	1/4	1-5/8	4-7/16	9-3/4	21/64	2-25/32	15/16
450-600	13-3/8	2-1/2	1/4	2	5-5/16	11-1/8	25/64	2-25/32	1-1/8



Type 4 70-600A

Type 4, 650-1200 Amperes - Dimensions

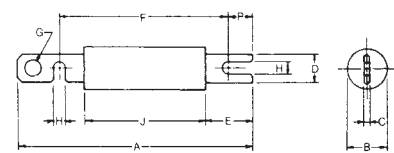
Ampere Rating	Inches							
	A	B	D	E	F	J	K	Q
600 VAC only - A6Y (Amp) - 4								
650-1200	10-1/2	3	2	3-3/8	7-7/8	3-3/4	1-5/16	5/8



Type 4 650-1200A

Type 5, 125-600 Amperes/Hinge Disconnect type - Dimensions

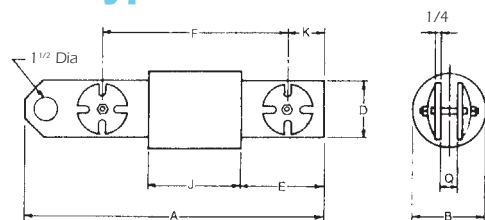
Ampere Rating	Inches									
	A	B	C	D	E	F	G	H	J	P
600 VAC/500 VDC - A6Y (Amp) - 5										
125-200	10-3/4	1-1/2	3/16	1-1/8	3-7/16	8-1/4	3/4	17/64	2-25/32	11/16
225-400	13-1/4	2	1/4	1-5/8	4-7/16	9-3/4	7/8	21/64	2-25/32	15/16
450-600	15-3/16	2-1/2	1/4	2	5-5/16	11-1/8	1	25/64	2-25/32	1



Type 5 125-600A

Type 5, 650-1200 Amperes/Hinge Disconnect Type - Dimensions

Ampere Rating	Inches							
	A	B	D	E	F	J	K	Q
600 VAC only - A6Y (Amp) - 5								
650-1200	12-1/8	3	2	3-3/8	7-7/8	3-3/4	1-5/16	5/8

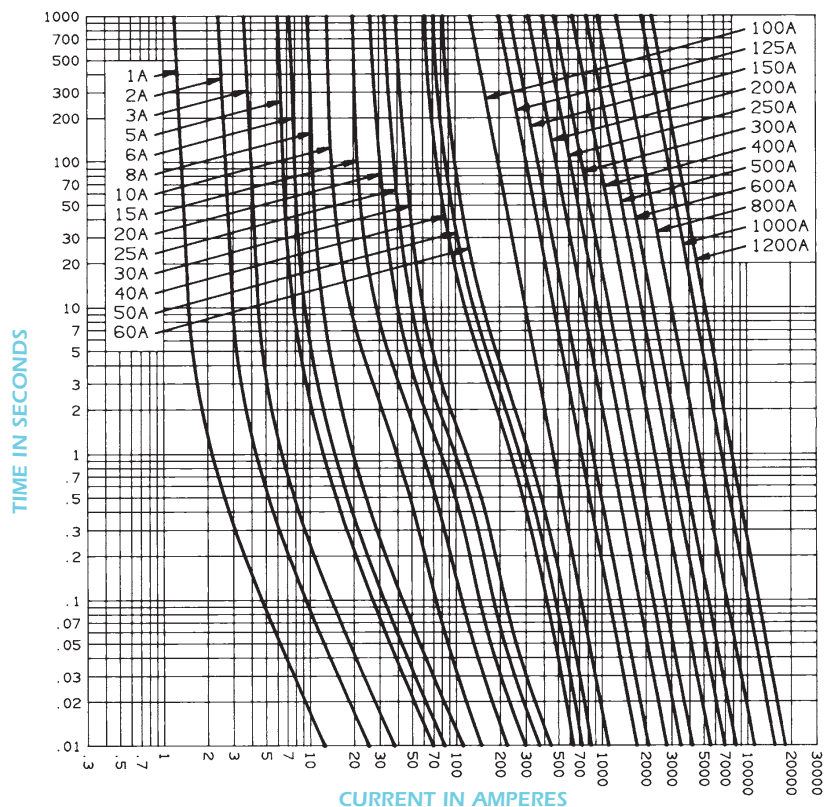


Type 5 650-1200A

American Fuses Form 600 A2Y, A6Y

1-600 Amperes, 250 or 600 Volts - Types 1, 3 or 5
800-1200 Amperes, 600 Volts - Types 4 or 5

MELTING TIME - CURRENT DATA



DC Capability

Cat No. Prefix	Ampere Rating	DC Voltage Rating*
A2Y	1-600	500
A6Y	1-600	500

*Consult factory for specifics regarding circuit time constants and DC interrupting rating.

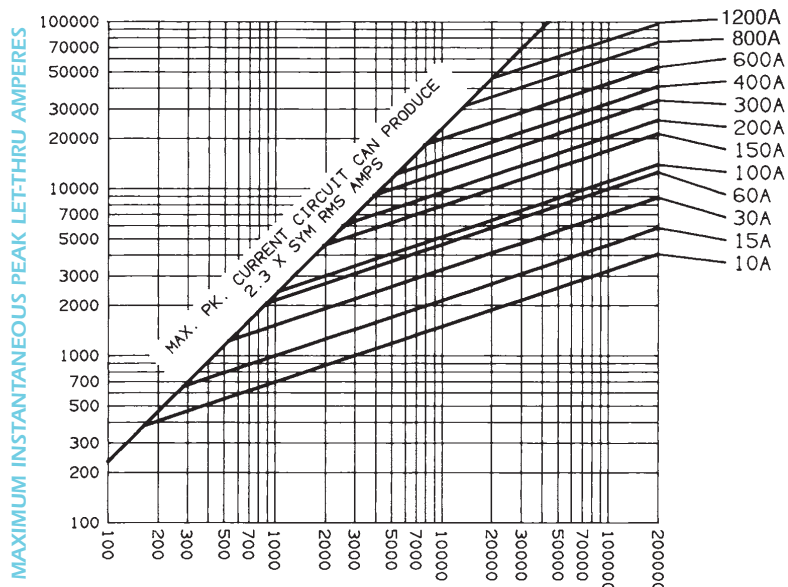
Recommended Fuse Blocks With Box Connectors For Form 600 Types 1 & 3 Fuses

Ampere Rating	250V		600V	
	1 Pole	3 pole	1 Pole	3 pole
Catalog Number				
1-30	20306	20308	60306	60308
31-60	20606	20608	60606	60608
61-100	21036	21038	61036	61038
101-200	22001	22003	62001	62003
201-400	24001	24003	64001	64003
401-600	2631	2633	6631	6633

Reference Number	250V				600V	
	1 Pole	3 pole	1 Pole	3 pole	1 Pole	3 pole
Reference Number						
1-30	Z212381	F215446	V211871	X213920		
31-60	N211865	C214431	X211873	Z213922		
61-100	S201105	Q211867	K201627	S211363		
101-200	Y213415	E214433	M212393	H213424		
201-400	T219046	-	H218530	T219575		
401-600	F214434	K215450	Z216475	W217507		

10-600 Amperes, 250 or 600 Volts
800-1200 Amperes, 600 Volts only

PEAK LET-THRU CURRENT DATA



AVAILABLE CURRENT IN RMS SYMMETRICAL AMPERES