

## Medium Voltage Disconnectors

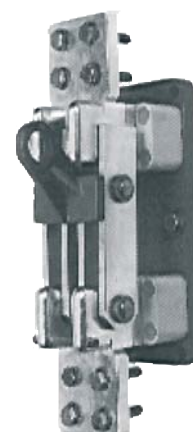
**HAZS Range**

**3.6 kV**

**400 A to 4.0 kA – up to 175 Hz**

**One pole – Switch hook operation**

- Large isolation air and creepage path
- Self-cleaning blade contacts
- True opening and visible distance
- Rugged anti-torsion construction
- Large customisation with:
  - Auxiliary switches, blocking magnets
- According to IEC 62271-102



### Electrical Characteristics

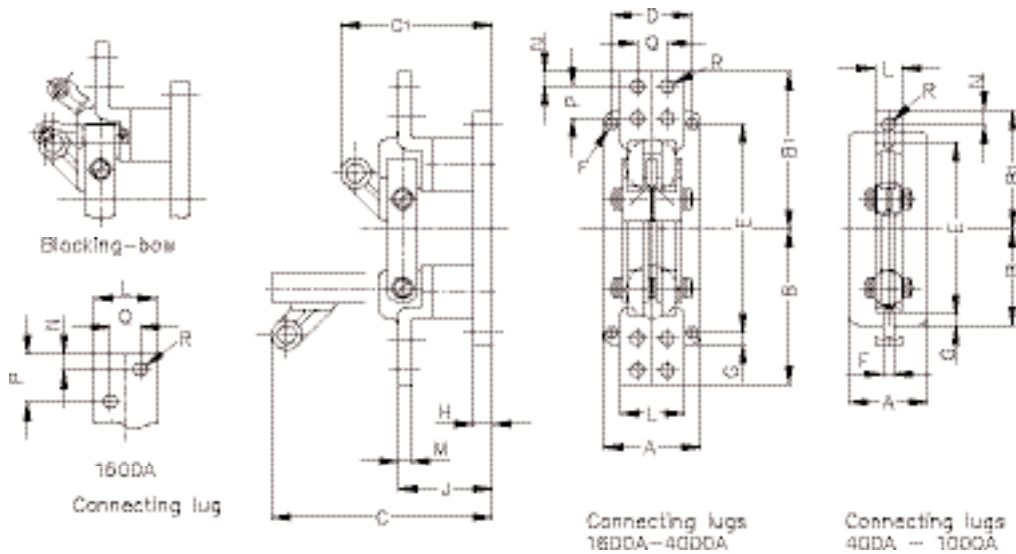
Rated thermal current		RMS 1 sec short-time withstand current (kA)	Rated peak current (kA)
AC (A)	DC (A)		
400	400	26	65
630	630	26	65
1000	1250	40	100
1600	1900	52	130
2000	2400	52	130
3150	3750	71	177
4000	5300	71	177

Dielectric withstand voltage 1 min/50 Hz		Rated impulse withstand voltage BIL	
Phase to earth (kV)	Across the isolating distance (kV)	Phase to earth (kV)	Across the isolating distance (kV)
10	12	40	46

- No-load operation
- Indoor type – only vertical mounting
- Mechanical endurance:  $\leq 1\text{kA} = 25\ 000$  cycles;  $>1\text{kA} = 50\ 000$  cycles (open / close)
- Maximum temperature withstand at  $130^\circ\text{C}$  without damages to the switch
- Electrical contact by contact knives with pressed on hard silver contact rivets and silver-plated electrolytic copper plates
- Small making / breaking capacity (on demand)
- Supporting insulators made of cast epoxy resin (fire classification according to UL94-V1)

## Main dimensions

### HAZS 400 – 4 000 A



\*\* Enlargement Dimensions  
C, J, H for Motor drive

Amp AC	A poles	B=B1	C	C1	D	E	F∅	G	H	J	L	M	N	P	Q	R∅	Weight (kg)
400		125	262	165						108	30	6	15			11	2.2
630	80	135	270	185	-	250	12	15	20		40	10	20	-	-		2.3
1000		144	270	185						116							4
1600	100	200	330	200						126	60	12	18	27	27	14	7.2
2000	110	225.5	335	220	60	320	14	20	25	137	80	18		40			11.5
3150	133		340	240						143	100		20	40	50		16
4000	140	224	330	230	65	300			24	149	120	20		60			20

## Switch hooks

Construction : Hard paper with DIN-hooks according to VDE 0681, part 2. Only suitable for dry rooms

Reference number	Length (mm)	Dielectric Withstand voltage (kV)	Weight (kg)
1.021.04	1120	20	0.81
1.021.06	1520	45	0.99
1.021.07	2020	60	1.21

Ferraz Shawmut has it all for defining and offering customized solutions to meet your most specific requirements :

- Adapted drives or control units
- Adapted technical performances (short-circuit current capability, endurance, small load make / break capacity)