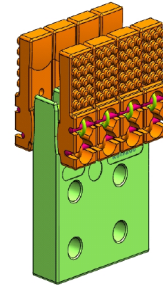


# High Power Switches

## HAK Range connectors

**HAK TYPE**

**Up to 24 kV - 5400 A**



### Electrical Characteristics

- The design is according to EN50123

Designation	Article Number	Number of fingers pairs	Rated current	Rated voltage	Withstand current	Rated peak current	Max. temperature
HAK - 5400 A - F110	Q819205	4	5000	Up to 24 kV	63 kA / 0,3 s	162 kA	105°C
HAK - 5400 A - F110	F829316	3	3750	Up to 24 kV	48 kA / 0,3 s	121,5 kA	105°C
HAK - 5400 A - F110	J829319	2	2500	Up to 24 kV	31,5 kA / 0,3 s	81 kA	105°C

Designation	Article Number	Operation cycles	Weight	Force for opening	Force for closing	Electrical resistance	Movability	Drawing number
HAK - 5400 A - F110	Q819205	23 000	4,7 kg	100 N	145 N	5 $\mu$	4 mm	819205
HAK - 5400 A - F110	F829316	23 000	4,1 kg	90 N	120 N	7,5 $\mu$	4 mm	829316
HAK - 5400 A - F110	J829319	23 000	3,5 kg	80 N	92 N	10 $\mu$	4 mm	829319

### Dimensions and weight

