

HIGH-POWER Switchgear Division

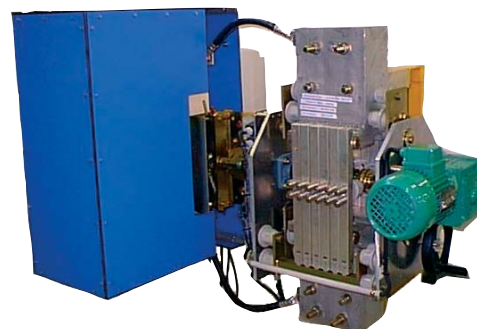
FOUILLERET Product range

DBM TYPE

DC Loadbreak Switches

20 kA - 1500 V DC

- Load Make and Break
- Deformable (option)
- True opening distance
- Modular design
- Self - cleaning
- Copper and / or Aluminium construction



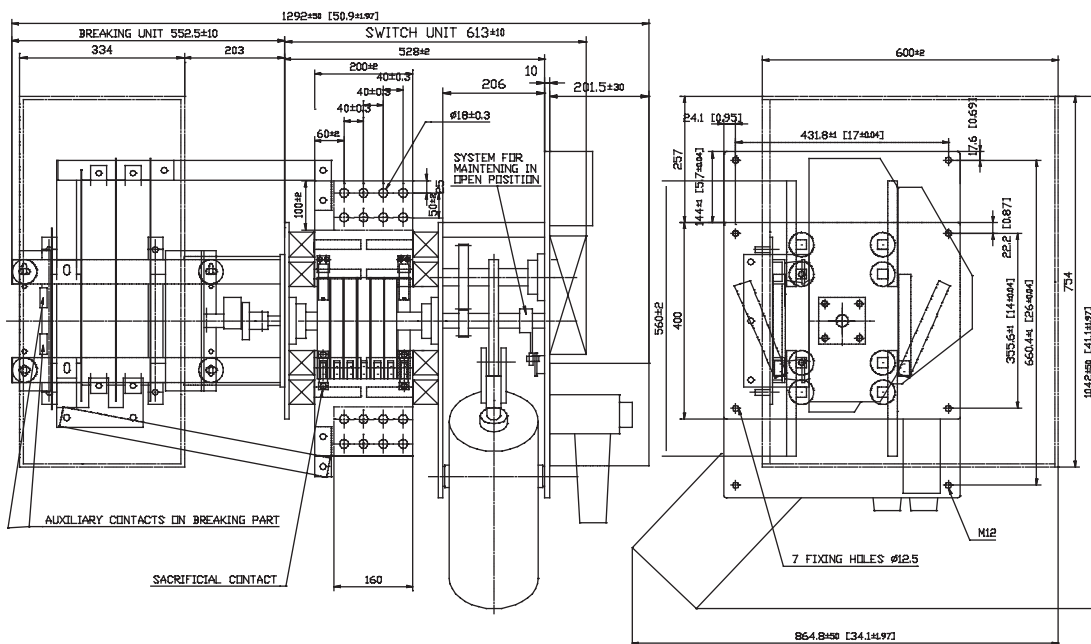
Electrical Characteristics

Rated thermal current DC (kA)	RMS 1 sec short-time withstand current	Rated peak current
13,5	66 kA	120 kA
18,0	66 kA	160 kA
20,0	66 kA	200 kA

Dielectric withstand voltage 1 min/50 Hz		Rated impulse withstand voltage BIL	
Phase to earth (kA)	Across the isolating distance (kA)	Phase to earth (kA)	Across the isolating distance (kA)
10	12	40	46

- On-load operation
- Indoor type – only vertical mounting
- Mechanical endurance: $\leq 1\text{kA} = 25\ 000$ cycles; $>1\text{kA} = 50\ 000$ cycles (open / close)
- Maximum temperature withstand at 130°C without damages to the switch
- Electrical contact by contact knives with pressed on hard silver contact rivets and silver-plated electrolytic copper plates
- Supporting insulators made of cast epoxy resin (fire classification according to UL94-V1)

DBM 13.5 kA



DBM 20 kA

