

## American Fuses E-Rated 5.5kV, 8.25kV and 15.5kV - CS 3 Series



### 5kV, 8 kV and 15kV Ferrule mounted fuses

Amp-trap CS-3 E-rated 5kV, 8kV and 15kV fuses have either 2" or 3" diameter barrels with ferrules and are mounted in spring reinforced clips. They are UL listed as "general purpose current-limiting fuses" and are for use indoors (or outdoors in a weathertight enclosure). The unique time-current characteristic of Ferraz Shawmut E-rated fuses allows them to be closely sized to transformer full-load rated current, as recommended by IEEE guidelines, without being affected by normal magnetizing inrush current. CS-3 fuses are typically sized at transformer rated current of 133%, thereby providing superior overall protection.

### Features/Benefits

- UL Listed for compatibility with UL listed equipment
- Ferrule mounting for standard clips and interchangeability with other brands of fuses
- Current Limiting for superior equipment protection
- Blown-fuse indicator gives positive identification of open fuse
- Non-venting for silent operation

### Ratings

#### A055F

**AC:** 5E to 450E  
5.5kV, 63kA I.R. Sym.

#### A825X

**AC:** 10E to 200E  
8.25kV, 50kA I.R. Sym.

#### A155F

**AC:** 5E TO 200E  
15.5kV, 50kA I.R. Sym.

### Highlights



- E-Rated
- UL Listed
- Complies with ANSI C37.46

### Applications

Protection for 5.5, 8.25 or 15.5kV transformers or distribution systems

### Definitions

#### E-rating

E-rated fuses operate as follows:  
100E or less - must melt in 300 seconds (5 mins.) on 200 to 240% of E (ampere) rating.  
Over 100E - must melt in 600 seconds (10 mins.) on 220 to 264% of E (ampere) rating.

Example - A 100E fuse must melt in 300 seconds with an applied current of 200 to 240 amperes.

#### General Purpose Current-Limiting Fuse

A general purpose current-limiting power fuse is one that is capable of interrupting all currents from its rated interrupting rating down to the current that causes melting of the fusible element in one hour.

#### Spring-Reinforced Clips for CS-3 Fuses:

228-700-530 (One pair of clips)  
For 3" diameter, 2 barrels max.

### Approvals

UL Listed to JEEG, "Fuses Over 600 Volts"  
File # E 143362

# Medium voltage fuses

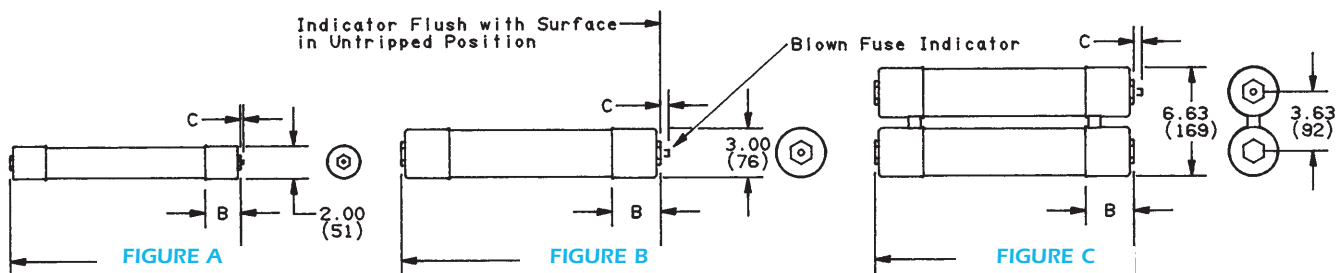
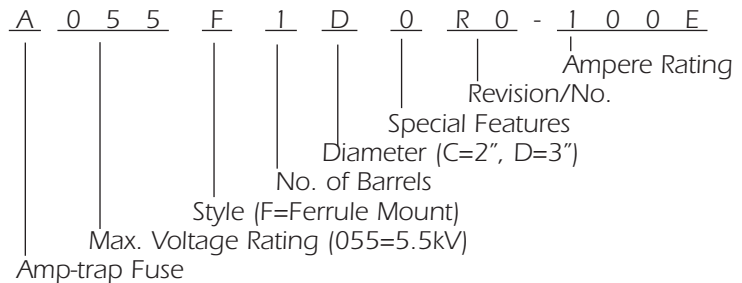
## American Fuses

### E-Rated

### 5.5kV, 8.25kV and 15.5kV - CS 3 Series

#### 5.5kV Ferrule Mounted

#### CATALOG NUMBERING SYSTEM



#### Reference Numbers, Ratings, Dimensions, CS-3 Series, 5.5kV

Catalog Number	Reference Number	Ampere Rating	Number of Barrels	Fig.	Dimensions Inches (mm)			Interrupting Rating RMS SYM.*Amp.
					A	B	C	

#### 5.5kV Max. – Ferrule Mounted Style – 12" (305mm) Clip Centers – 2" (50.8mm) Barrel Diameter

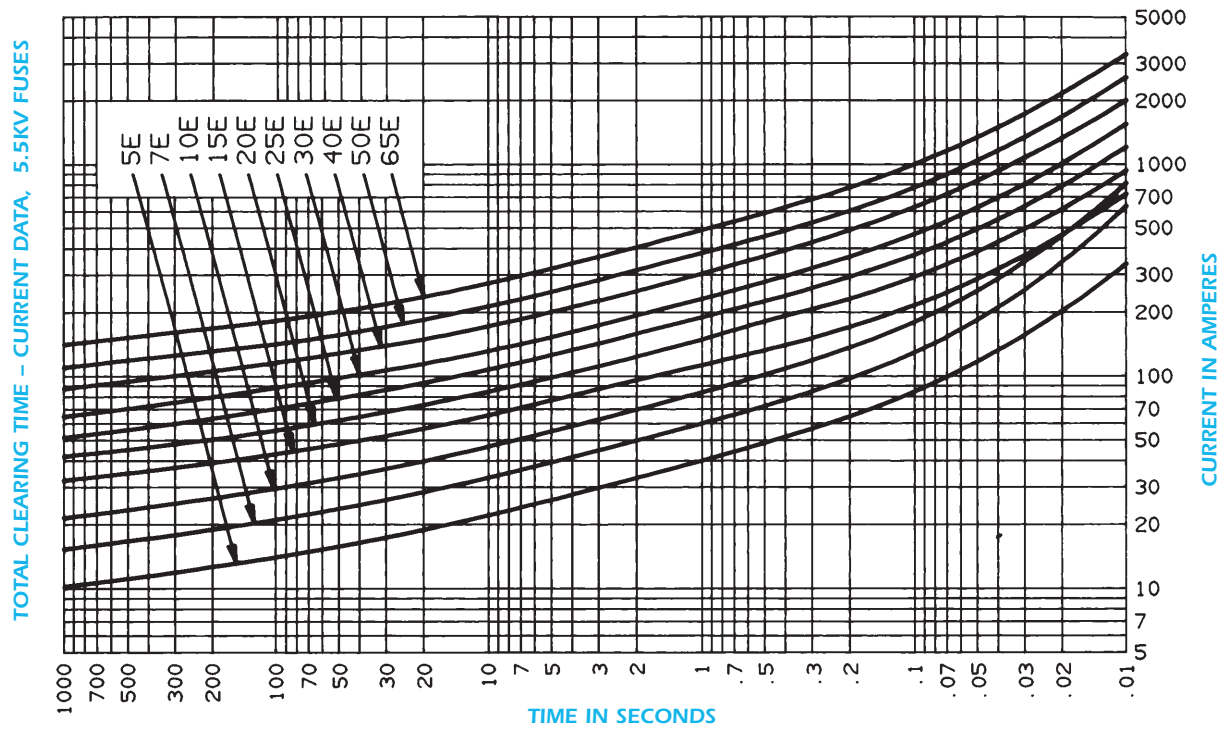
A055F1CORO-5E	S213364	5E	1	A	14.11 (358)	2.2 (56)	.19 (4.8) Tripped Force 1 lb.	63,000
A055F1CORO-7E	T214377	7E						
A055F1CORO-10E	A222709	10E						
A055F1CORO-15E	P223228	15E						
A055F1CORO-20E	E201047	20E						
A055F1CORO-25E	N201561	25E						
A055F1CORO-30E	H203557	30E						
A055F1CORO-40E	V212331	40E						
A055F1CORO-50E	J212850	50E						
A055F1CORO-65E	J213862	65E						

#### 5.5kV Max. – Ferrule Mounted Style – 12" (305mm) Clip Centers – 3" (76.2mm) Barrel Diameter

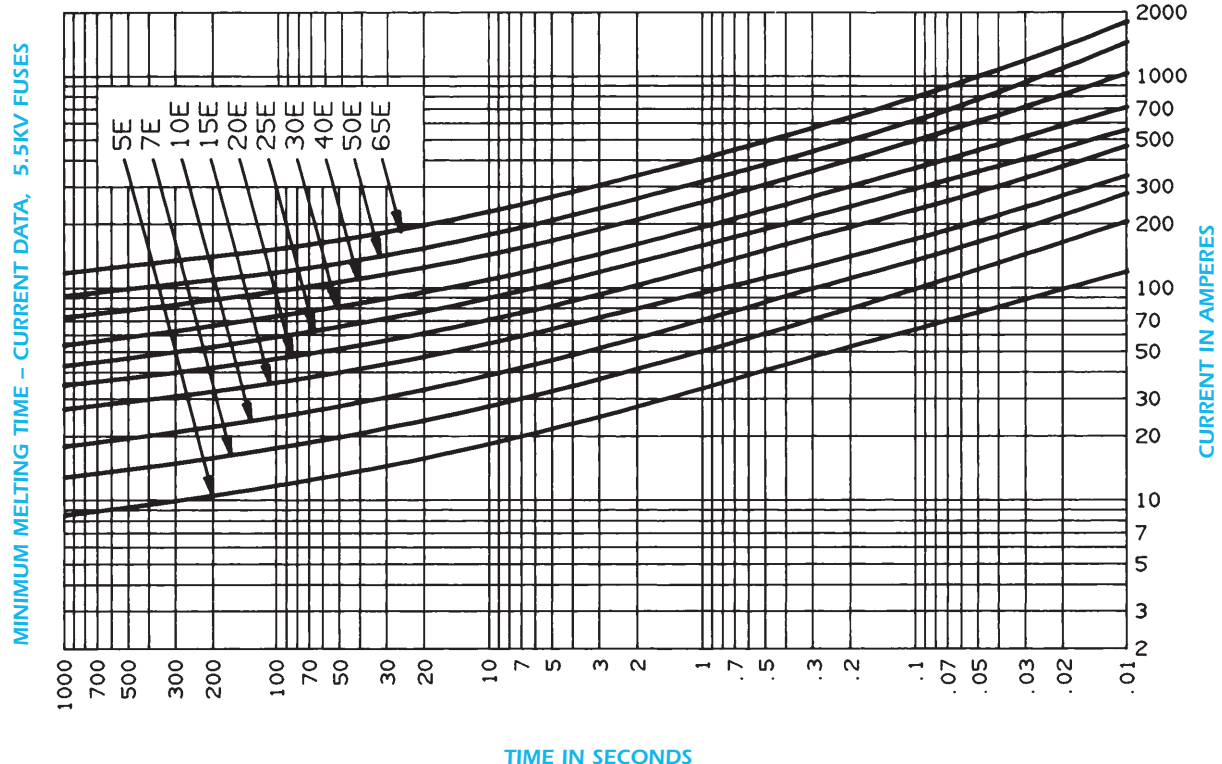
A055F1DORO-10E	T214883	10E	1	B	15.88 (403)	3.0 (76)	0.5 (13) Tripped Force 2 lbs.	63,000
A055F1DORO-15E	M218465	15E						
A055F1DORO-20E	T221967	20E						
A055F1DORO-25E	C222711	25E						
A055F1DORO-30E	Q223229	30E						
A055F1DORO-40E	G201049	40E						
A055F1DORO-50E	Q201563	50E						
A055F1DORO-65E	V203591	65E						
A055F1DORO-80E	A211301	80E						
A055F1DORO-100E	V214378	100E						
A055F1DORO-125E	Y217440	125E	2	C				
A055F1DORO-150E	G217954	150E						
A055F1DORO-175E	F218988	175E						
A055F1DORO-200E	Y219510	200E						
A055F2DORO-250E	G218989	250E						
A055F2DORO-300E	Z219511	300E						
A055F2DORO-350E	V221968	350E						
A055F2DORO-400E	D222712	400E						
A055F2DORO-450E	R223230	450E						

## American Fuses E-Rated 5.5kV, 8.25kV and 15.5kV - CS 3 Series

### A055F1CORO - 5E to 65E



### A055F1CORO - 5E to 65E



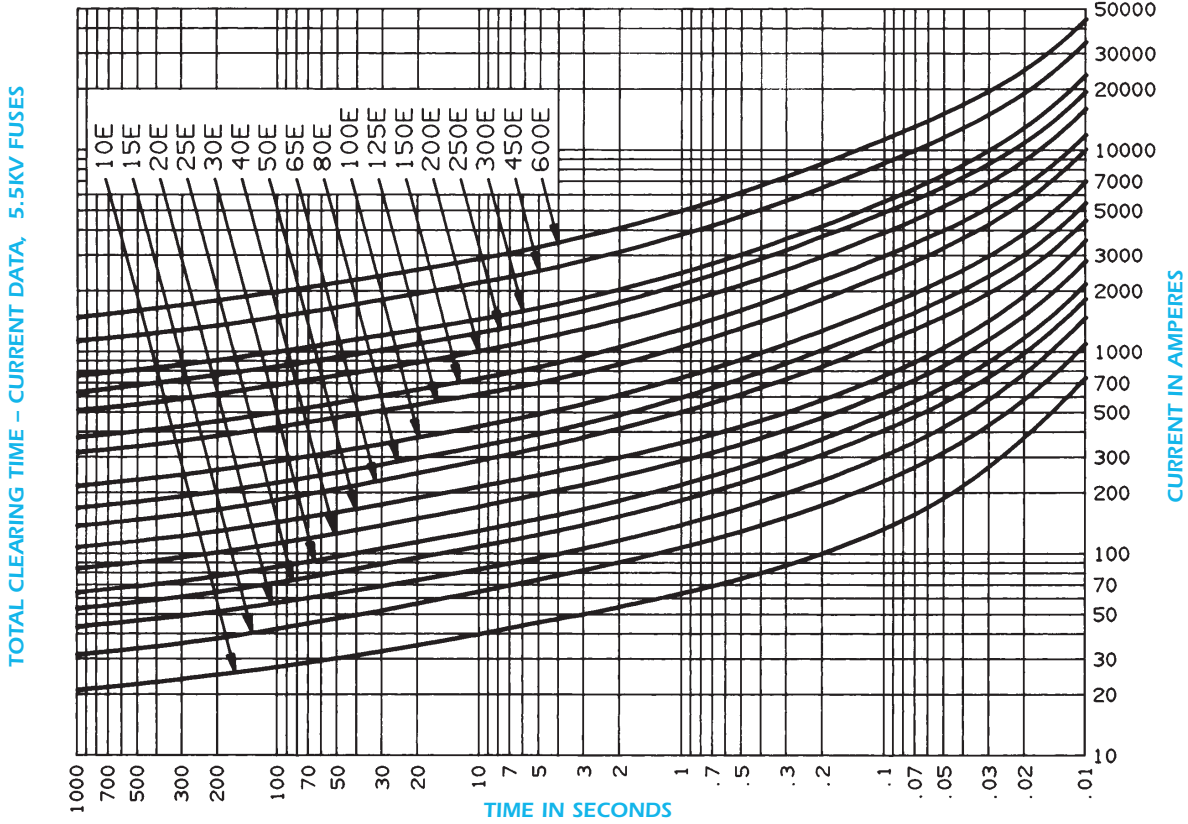
# Medium voltage fuses

## American Fuses

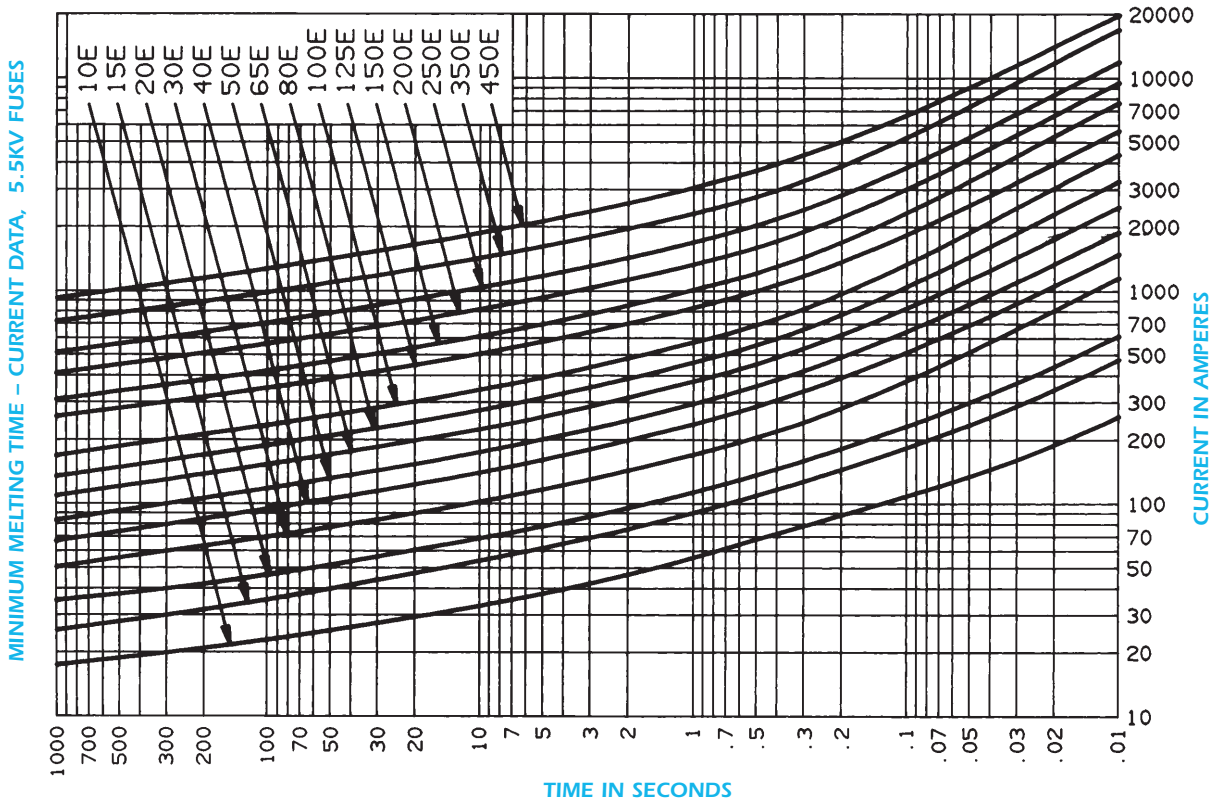
### E-Rated

### 5.5kV, 8.25kV and 15.5kV - CS 3 Series

#### A055F1DORO - 10E to 200E and A055F2DORO - 250E to 450E

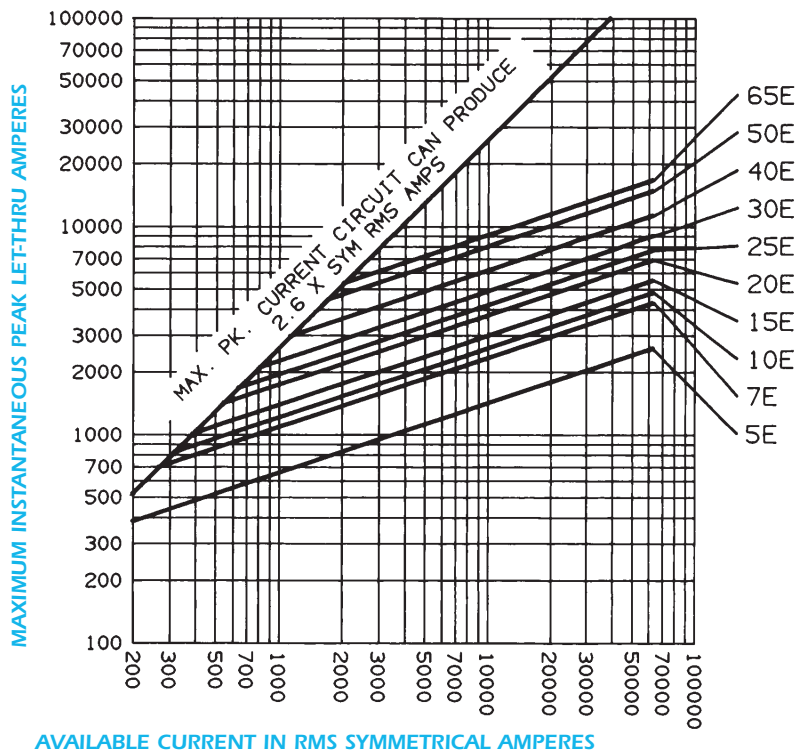


#### A055F1DORO - 10E to 200E and A055F2DORO - 250E to 450E

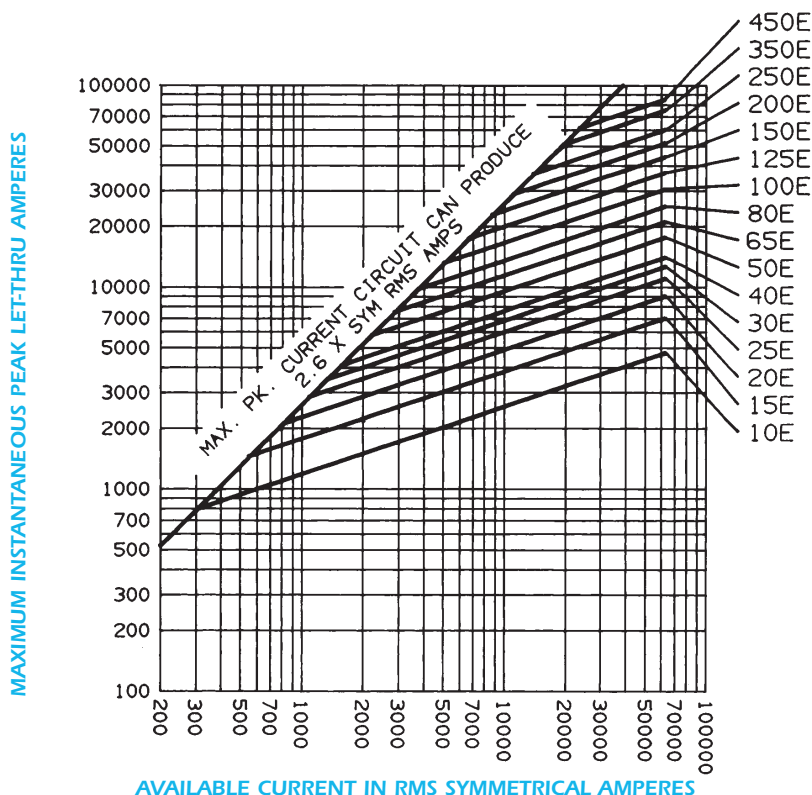


## American Fuses E-Rated 5.5kV, 8.25kV and 15.5kV - CS 3 Series

### A055F1CORO - 5E to 65E Peak Let-Thru Current Data, 5.5kV CS-3 Fuses



### A055F1DORO - 10E to 200E and A055F2DORO - 250E to 450E Peak Let-Thru Current Data, 5.5kV CS-3 Fuses



# Medium voltage fuses

## American Fuses

### E-Rated

### 5.5kV, 8.25kV and 15.5kV - CS 3 Series

#### 8.25kV Ferrule Mounted

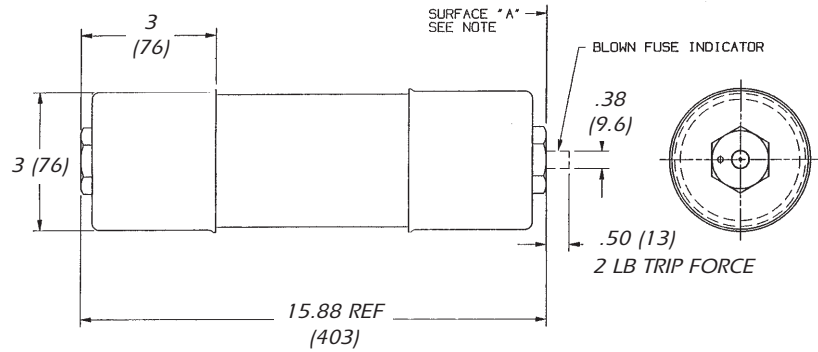


FIGURE A

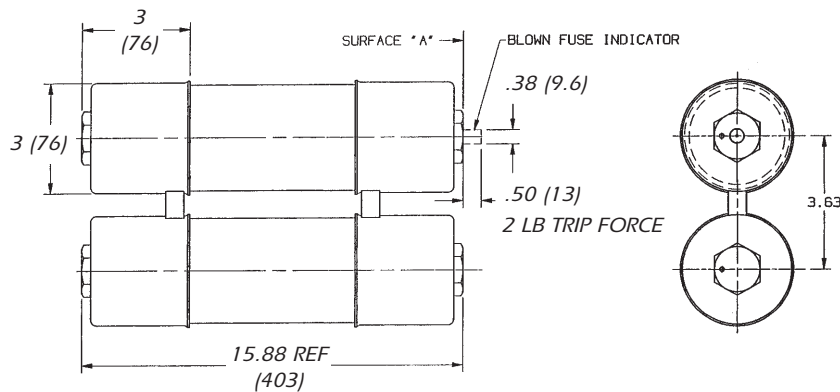


FIGURE B

Catalog Number	Reference Number	Ampere Rating	Number of Barrels	Figure SYM. Amperes*	Interrupting Rating RMS
----------------	------------------	---------------	-------------------	----------------------	-------------------------

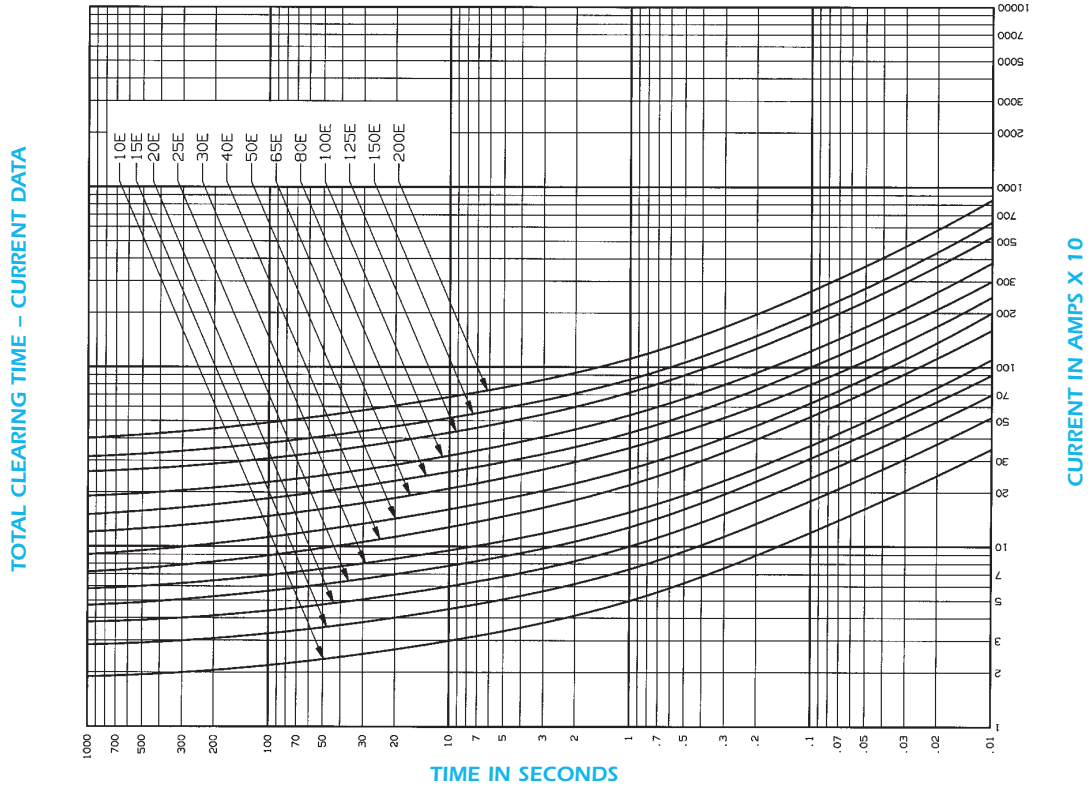
8.25kV Max. – Ferrule Mounted Style – 12" (305mm) Clip Center – 3" (76.2mm) Barrel Diameter

A825X10E-1	-	10E	1	A	50,000
A825X15E-1	-	15E	1	A	
A825X20E-1	C215903	20E	1	A	
A825X25E-1	G216413	25E	1	A	
A825X30E-1	P216926	30E	1	A	
A825X40E-1	L217958	40E	1	A	
A825X50E-1	R218469	50E	1	A	
A825X65E-1	K218992	65E	1	A	
A825X80E-1	C219514	80E	1	A	
A825X100E-1	M211818	100E	1	A	
A825X125E-1	A212336	125E	2	B	50,000
A825X150E-1	N213866	150E	2	B	
A825X200E-1	X214886	200E	2	B	

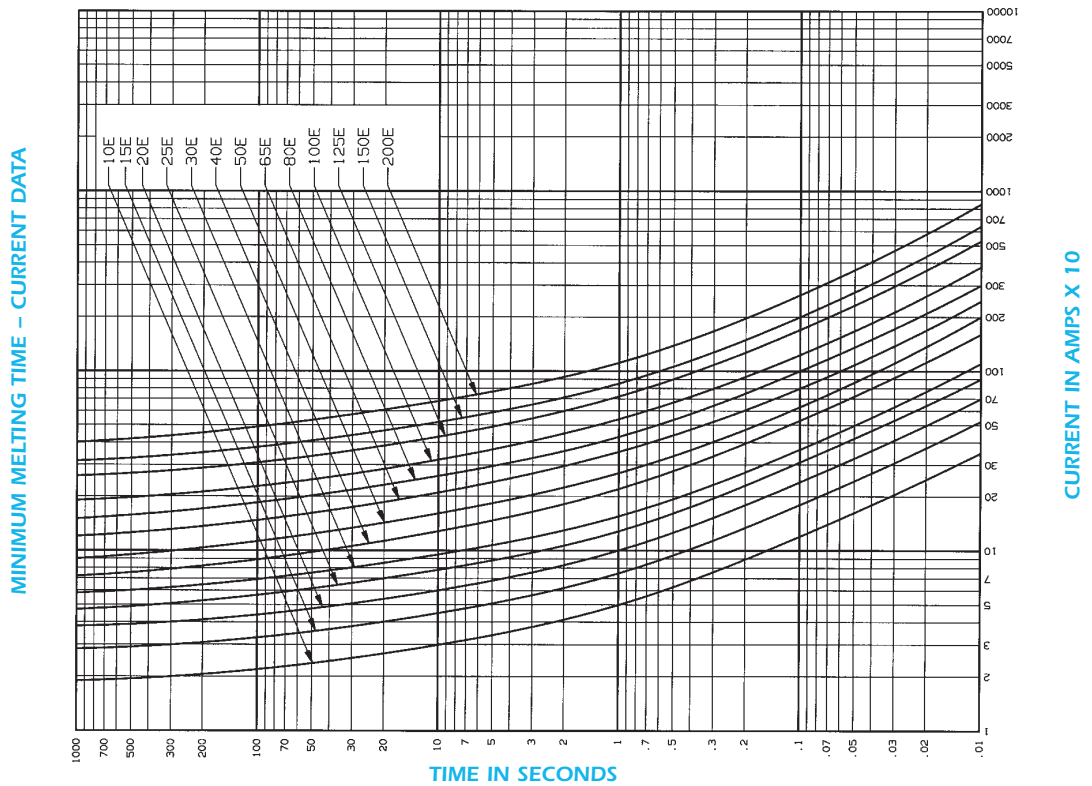
\* RMS ASYM. AMPS = RMS SYM. AMPERES x 1.6

## American Fuses E-Rated 5.5kV, 8.25kV and 15.5kV - CS 3 Series

### A825X (10E to 200E) -1



### A825X (10E to 200E) -1



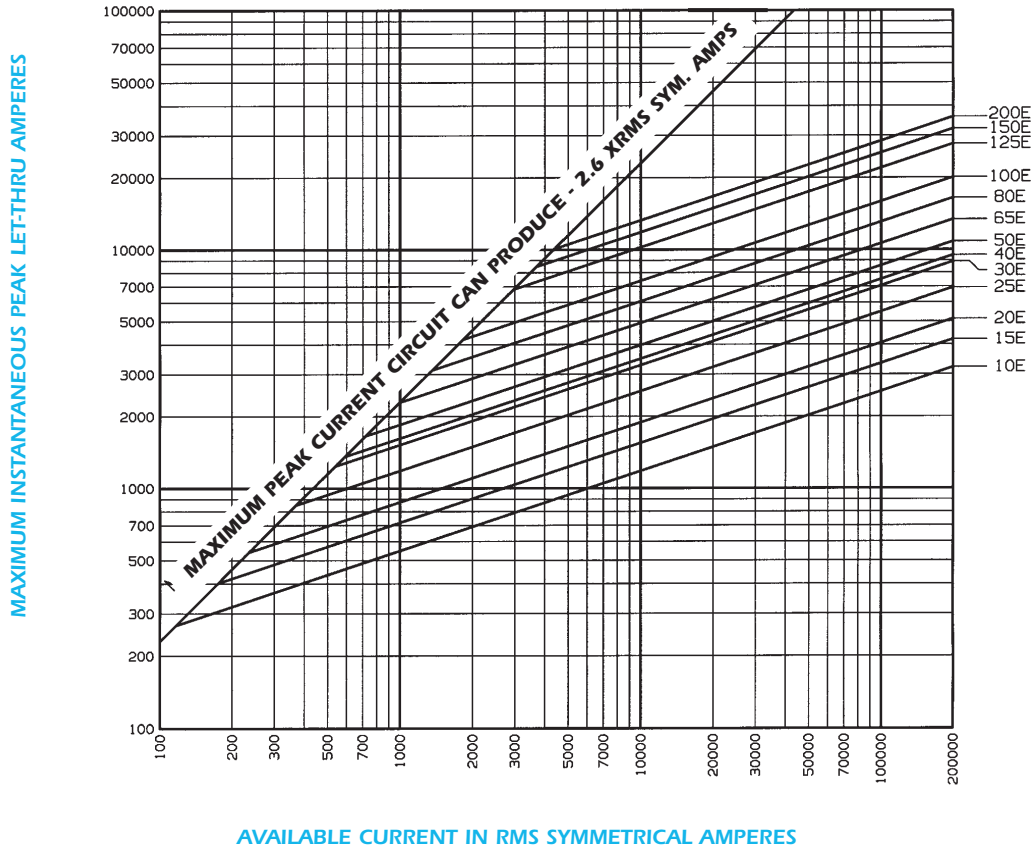
# Medium voltage fuses

## American Fuses

### E-Rated

### 5.5kV, 8.25kV and 15.5kV - CS 3 Series

#### A825X (10E to 200E) -1 Peak Let-Thru Current Data, E-Rated Fuses





## American Fuses E-Rated 5.5kV, 8.25kV and 15.5kV - CS 3 Series

### 15.5kV Ferrule Mounted

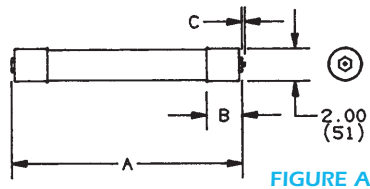


FIGURE A

Indicator Flush with Surface  
in Untripped Position

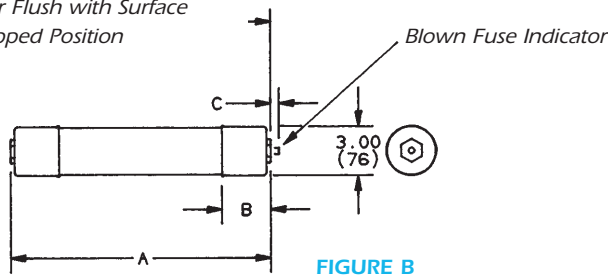


FIGURE B

#### CATALOG NUMBERING SYSTEM

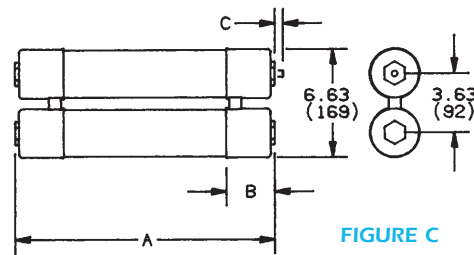
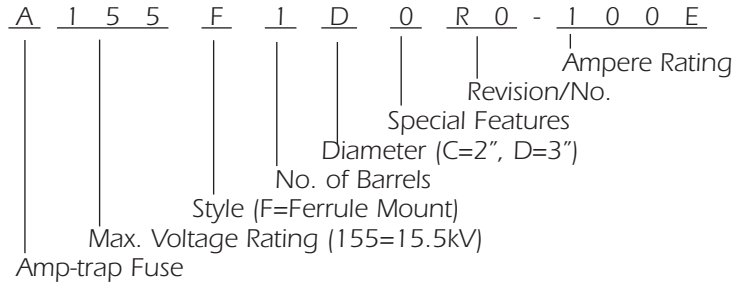


FIGURE C

### Catalog Numbering System, Ratings, Dimensions, CS-3 Series, 15.5kV

Catalog Number	Reference Number	Ampere Rating	Number of Barrels	Fig.	Dimensions Inches (mm)			Interrupting Rating RMS SYM. *Amp.
					A	B	C	

#### 15.5kV Max. - Ferrule Mounted Style - 15" (381 mm) Clip Centers - 2" (50.8mm) Barrel Diameter

A155F1CORO - 5E	E218E987	5E	1	A	17.03 (433)	2.2 (56)	.19 (4.8) Tripped Force 1 lb.	50,000
7E	X219509	7E						
10E	S214882	10E						
15E	X215392	15E						
20E	L216923	20E						
25E	F217953	25E						
30E	L218464	30E						

#### 15.5kV Max. - Ferrule Mounted Style - 15" (381mm) Clip Centers - 3" (76.2mm) Barrel Diameter

A155F1DORO - 10E	E216411	10E	1	B	18.87 (479)	3.0 (76)	0.5 (13) Tripped Force 2 lbs.	50,000
15E	A217442	15E						
20E	J217956	20E						
25E	P218467	25E						
30E	H218990	30E						
40E	A219512	40E						
50E	W221969	50E	2	C				
A155F2DORO - 65E	Q218468	65E						
80E	J218991	80E						
100E	B215902	100E						

#### 15.5kV Max. - Ferrule Mounted Style - 18" (457mm) Clip Centers - 3" (76.2mm) Barrel Diameter

A155F1DORO - 65E	S223231	65E	1	B	21.75 (552)	3.0 (76)	0.5 (13) Tripped Force 2 lbs.	50,000
80E	J201051	80E						
100E	A215901	100E						
A155F2DORO - 125E	F216412	125E	2	C				
150E	N216925	150E						
175E	B217443	175E						
200E	K217957	200E						

\* RMS ASYM. AMPERES = RMS SYM. AMPERES x 1.6

# Medium voltage fuses



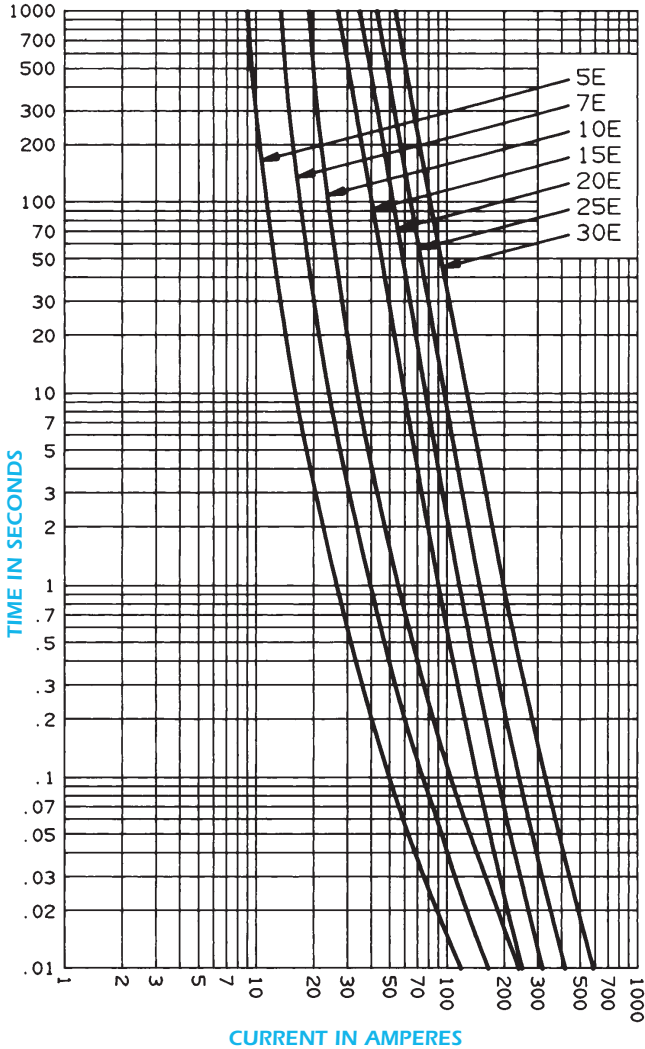
## American Fuses

### E-Rated

### 5.5kV, 8.25kV and 15.5kV - CS 3 Series

#### A155F1CORO - 5E to 30E

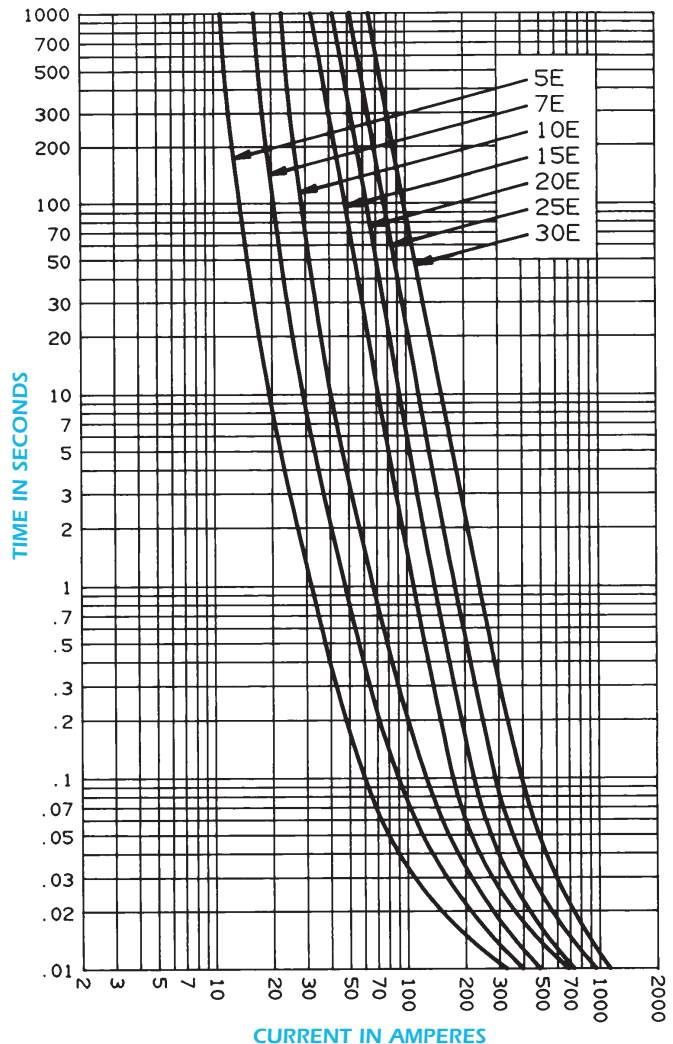
#### Minimum Melting Time - Current Data, 15.5kV Fuses



#### A155F1CORO - 5E to 30E

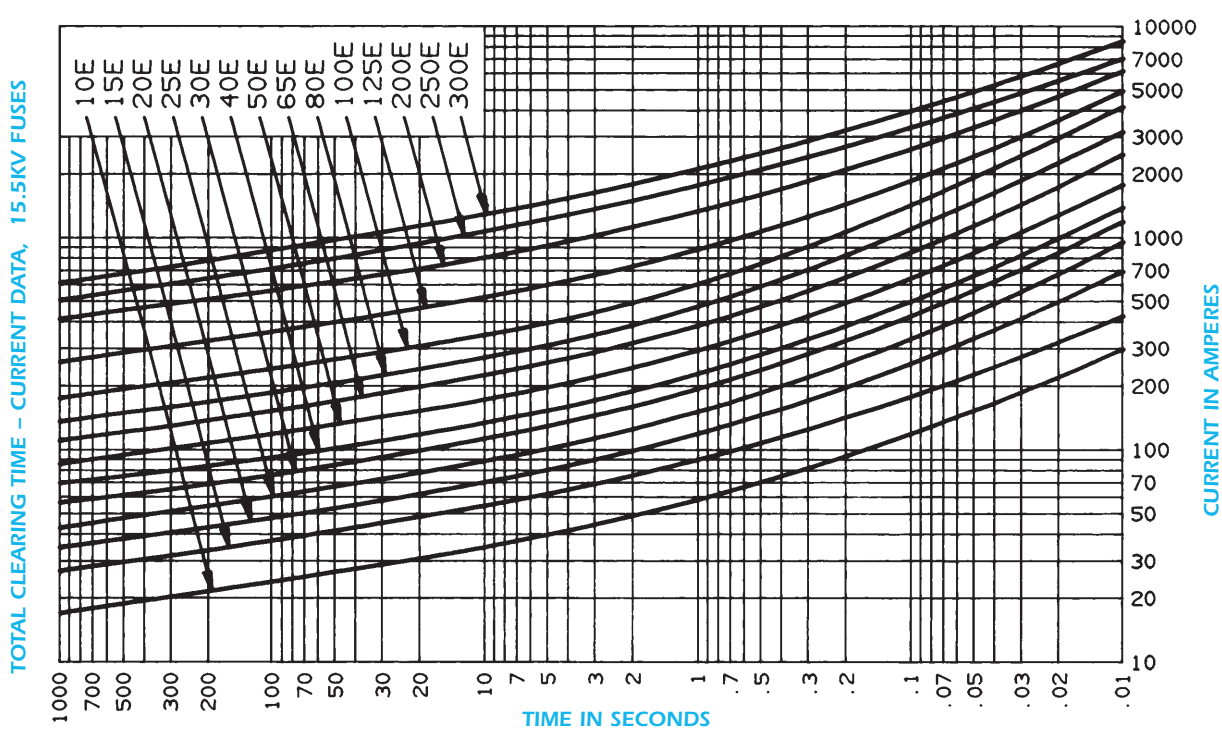
#### Total Clearing Time - Current

#### Data, 15.5kV Fuses

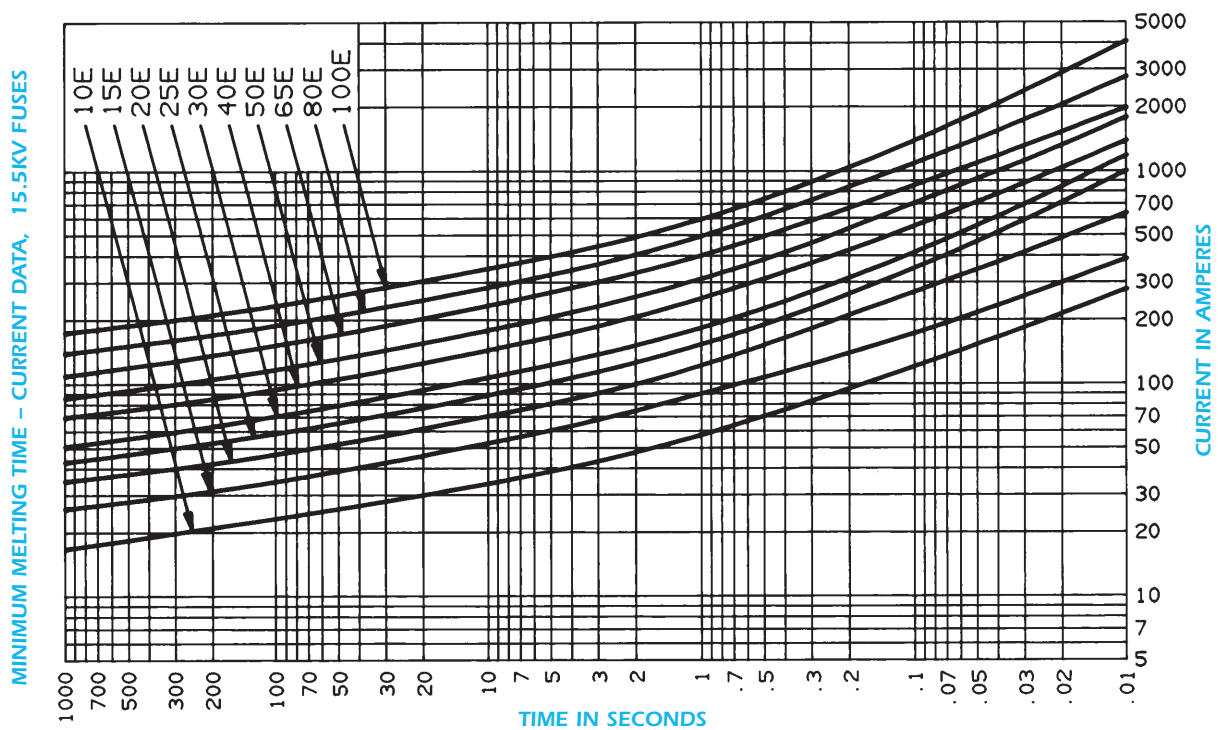


## American Fuses E-Rated 5.5kV, 8.25kV and 15.5kV - CS 3 Series

### A155F1DORO - 10E to 50E and A155F2DORO - 65E to 100E



### A155F1DORO - 10E to 50E and A155F2DORO - 65E to 100E



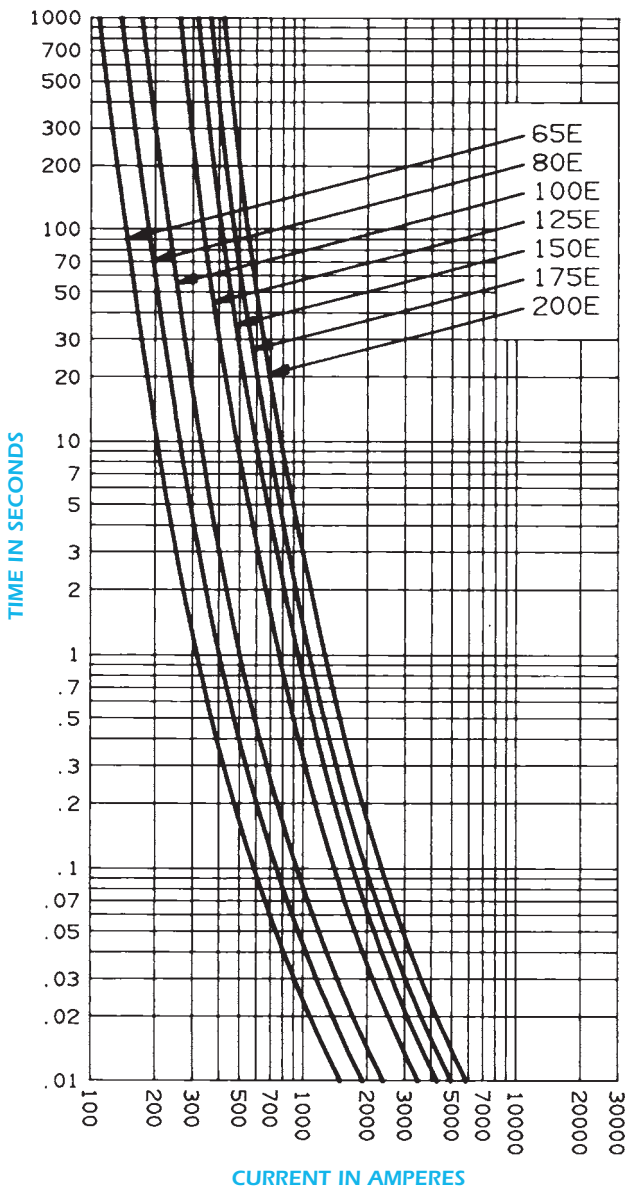
# Medium voltage fuses

## American Fuses

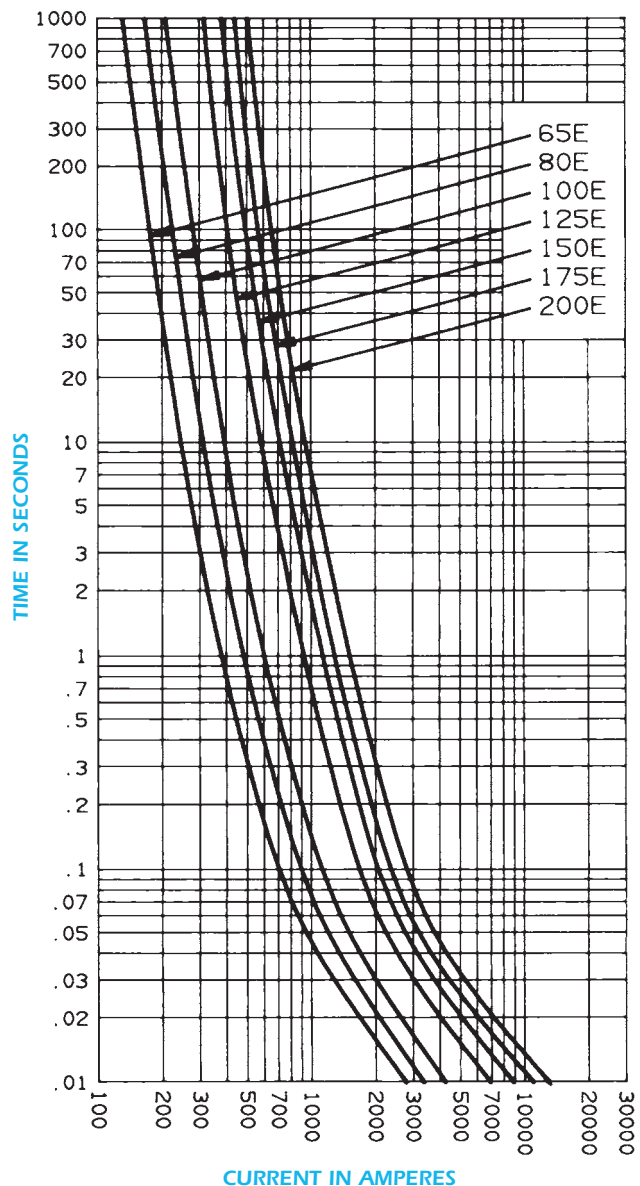
### E-Rated

### 5.5kV, 8.25kV and 15.5kV - CS 3 Series

#### A155F1DORO – 65E to 100E and A155F2DORO – 125E to 200E Minimum Melting Time – Current Data, 15.5kV Fuses

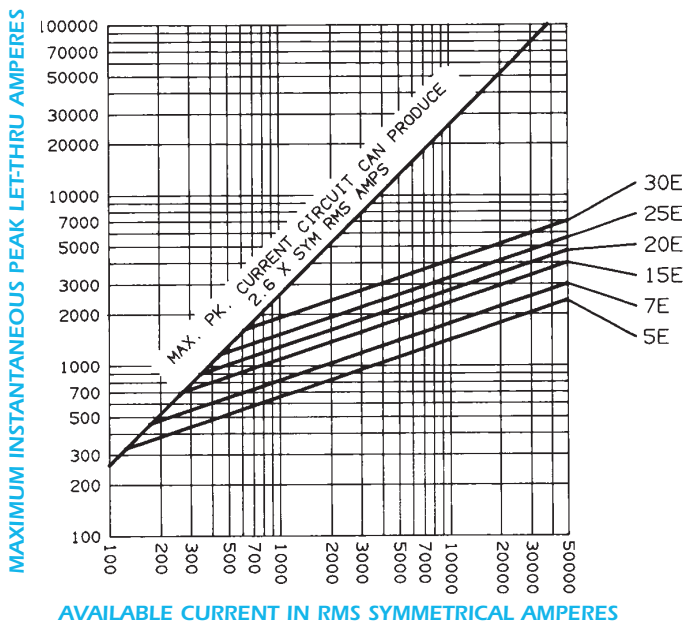


#### A155F1DORO – 65E to 100E and A155F2DORO – 125E to 200E Total Clearing Time – Current Data, 15.5kV Fuses

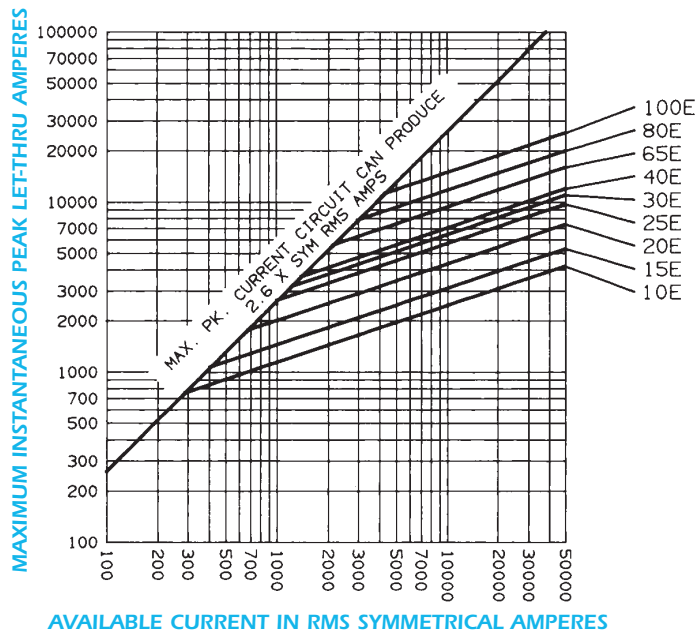


## American Fuses E-Rated 5.5kV, 8.25kV and 15.5kV - CS 3 Series

**A155F1CORO – 5E to 30E**  
Peak Let-Thru Current Data,  
15.5kV CS-3 Fuses



**A155F1DORO – 10E to 50E**  
**A155F2DORO – 65E to 100E**  
Peak Let-Thru Current Data,  
15.5kV CS-3 Fuses



**A155F1DORO – 65E to 100E**  
**A155F2DORO – 125E to 200E**  
Peak Let-Thru Current Data, 15.5kV CS-3 Fuses

