

General Purpose US Fuses

American Power Fuses AMP-TRAP® A4BT (Class L TD)

when your heavier loads need protection A4BT fuses won't let you down

The high interrupting rating of A4BT current limiting fuses is ideally suited for protecting mains, feeders, and general circuits. The 10-second time delay at 500% of fuse rating is ideal for large motors and other loads with a high inrush. A4BT fuses are suitable for DC applications up to 500VDC. An A4BT fuse can be applied to normal loads up to its full ampere rating to allow 100% rating of equipment.



Features/Benefits

- Unique dimensions prevent replacement by other fuse classes.
- Blade-stamped catalog numbers for permanent identification
- Glass melamine body and plated terminal provide superior reliability in harsh environments

Ratings

AC: 200 to 2,000A
600VAC, 200kA I.R.

DC: 200 to 2,000A
500VDC, 100kA I.R.

Highlights

- Current-Limiting
- Full 10-Second Delay
- DC Ratings
- Uniform Characteristics in all Ampere Ratings

Applications

- Motors
- Motor Controllers
- Transformers
- Panelboards
- Mains
- Feeders

Approvals



- UL Listed to Standard 248-10 (601-2000A)
- CSA Certified to Standard C22.2 No. 248.10 (601-2000A)
- DC Tested to UL 198L limits (601-2000A)

General Purpose US Fuses



American Power Fuses AMP-TRAP® A4BT (Class L TD)



Standard Fuse Ampere Ratings, Catalog Numbers

| Ampere Rating | Catalog Number | Ampere Rating | Catalog Number | Ampere Rating | Catalog Number |
|---------------|----------------|---------------|----------------|---------------|----------------|
| 200 | A4BT200 | 601 | A4BT601 | 1100 | A4BT1100 |
| 250 | A4BT250 | 650 | A4BT650 | 1200 | A4BT1200 |
| 300 | A4BT300 | 700 | A4BT700 | 1400 | A4BT1400 |
| 350 | A4BT350 | 750 | A4BT750 | 1500 | A4BT1500 |
| 400 | A4BT400 | 800 | A4BT800 | 1600 | A4BT1600 |
| 500 | A4BT500 | 900 | A4BT900 | 1800 | A4BT1800 |
| 600 | A4BT600 | 1000 | A4BT1000 | 2000 | A4BT2000 |

Three Phase Motor Fuse Selection 460 Volt Three Phase Motors

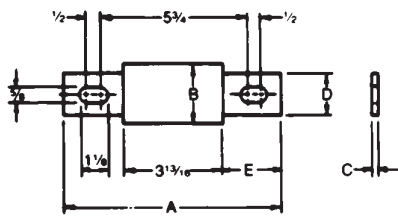
| Motor | Full Load | Recommended A4BT Ampere Rating | |
|------------|-----------|--------------------------------|----------------|
| | | Motor Acceleration Times | |
| | | HPAmperes | Typical |
| Heavy Load | at 460V | 5 seconds | Over 5 seconds |
| | 300 | 360 | 601 |

Standard Fuse Ampere Ratings, Reference Numbers

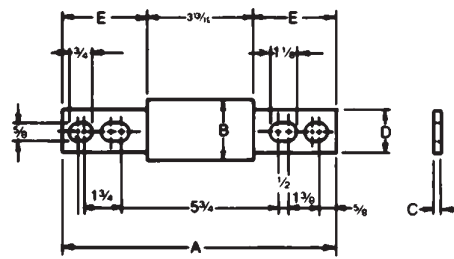
| Ampere Rating | Ref. Number | Ampere Rating | Ref. Number | Ampere Rating | Ref. Number |
|---------------|-------------|---------------|-------------|---------------|-------------|
| 200 | W212723 | 601 | Z218338 | 1100 | J200890 |
| 250 | E214249 | 650 | L218855 | 1200 | W201430 |
| 300 | G214757 | 700 | A219374 | 1400 | G201946 |
| 350 | L215773 | 750 | X219900 | 1500 | G211169 |
| 400 | R216284 | 800 | N222583 | 1600 | Z211691 |
| 500 | J217312 | 900 | K200891 | 1800 | F212203 |
| 600 | N217822 | 1000 | M222582 | 2000 | F213238 |

575 Volt Three Phase Motors

| | | | |
|-----|-----|-----|------|
| 400 | 382 | 601 | 700 |
| 500 | 472 | 700 | 1000 |



200-800A



801-2000A

Dimensions

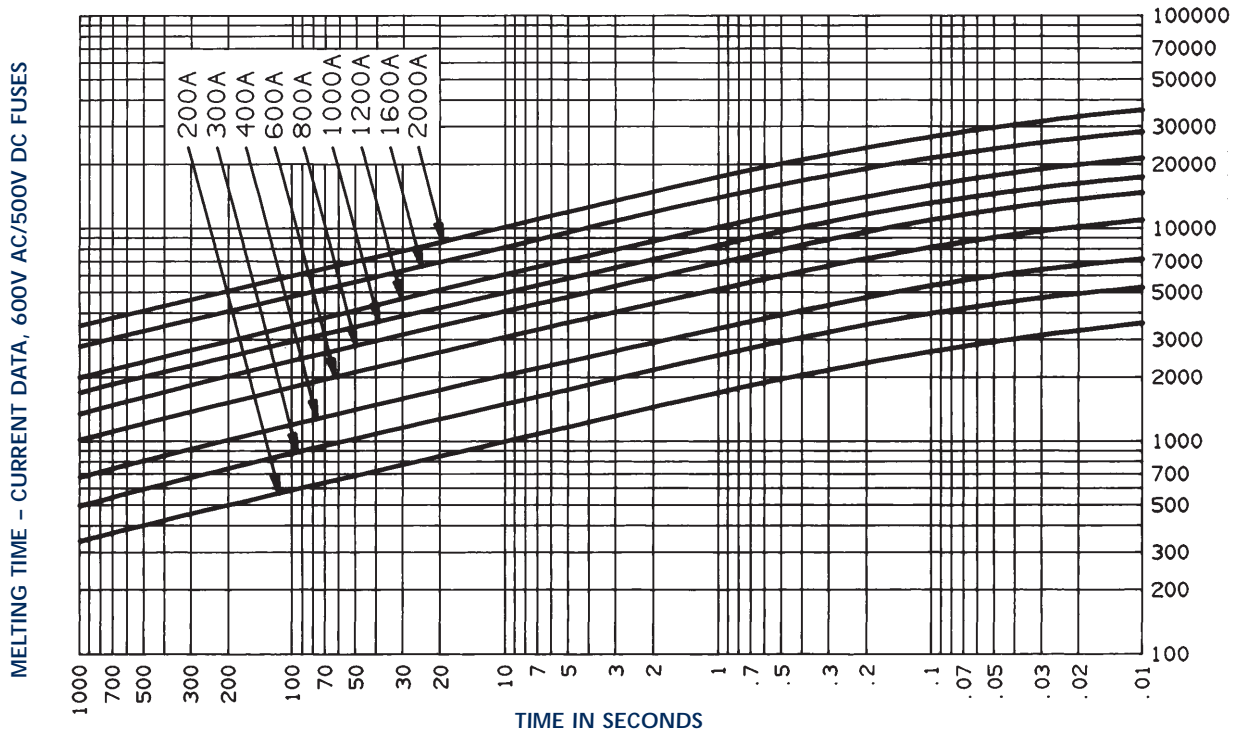
| Ampere Rating | A | | B | | C | | D | | E | |
|---------------|--------|-----|-------|----|------|----|-------|----|---------|----|
| | In. | mm | In. | mm | In. | mm | In. | mm | In. | mm |
| 200-600 | 8-5/8 | 219 | 2 | 51 | 5/16 | 8 | 1-5/8 | 41 | 2-13/32 | 61 |
| 601-800 | 8-5/8 | 219 | 2-1/2 | 63 | 3/8 | 9 | 2 | 51 | 2-13/32 | 61 |
| 801-1200 | 10-3/4 | 273 | 2-1/2 | 63 | 3/8 | 9 | 2 | 51 | 3-15/32 | 88 |
| 1201-1600 | 10-3/4 | 273 | 3 | 76 | 7/16 | 11 | 2-3/8 | 60 | 3-15/32 | 88 |
| 1601-2000 | 10-3/4 | 273 | 3-1/2 | 89 | 1/2 | 13 | 2-3/4 | 70 | 3-15/32 | 88 |

Safety Note: Class L fuses are dimensioned for one-way interchangeability.
A Class L fuse of any lower ampere rating can be substituted for a given Class L fuse.

General Purpose US Fuses

American Power Fuses
AMP-TRAP®
A4BT (Class L TD)

A4BT 200 to 2000



Peak Let-Thru Current Data - A4BT 300 to 2000, 600 Volts AC

