



# Gears & Fuse Gears

## American General Purpose Fuses Power Distribution Blocks FSPDB



### FSPDB IP20 Finger Safe Power Distribution Block

Ferraz Shawmut is launching a whole new concept of safety and easy installation with its new power distribution blocks. Protection to IP20 standards guarantees safety and eliminates the need for plastic protections.

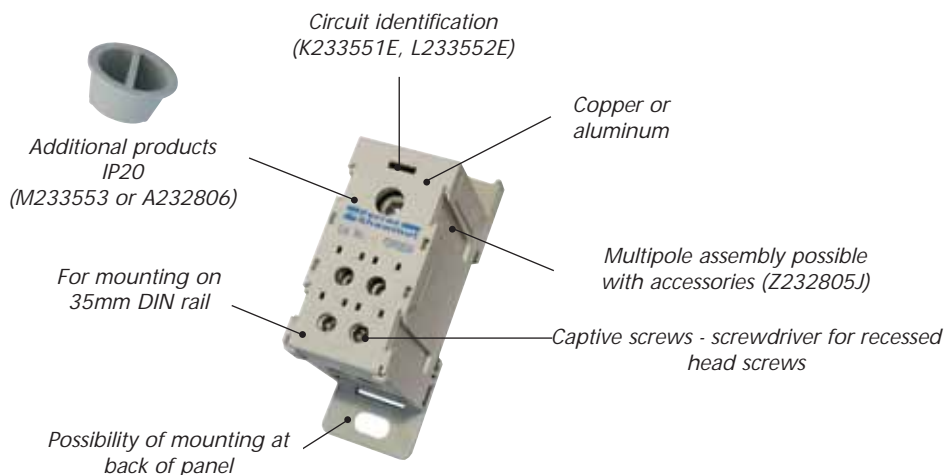
FSPDBs can be snapped onto a 35mm DIN rail or mounted at the back of a panel, and their modular design makes multipole assemblies easy. These power distribution blocks offer you a simple way of distributing electricity in cubicles through a wide variety of secondary circuits.

Reference	Designation	Nb. wire inlets	Nb. wire outlets	Materials	Pckg
X232803C	FSPDB4A 335A 1/1 16 to 185mm <sup>2</sup>	1x 185mm <sup>2</sup> to 16mm <sup>2</sup>	1x 185mm <sup>2</sup> to 16mm <sup>2</sup>	Aluminum	3
R232798C	FSPDB4C 335A 1/1 16 to 185mm <sup>2</sup>	1x 185mm <sup>2</sup> to 16mm <sup>2</sup>	1x 185mm <sup>2</sup> to 16mm <sup>2</sup>	Copper	3
D233545C	FSPDB1A 175A 1/1 2,5 to 70mm <sup>2</sup>	1x 70mm <sup>2</sup> to 2,5mm <sup>2</sup>	1x 70mm <sup>2</sup> to 2,5mm <sup>2</sup>	Aluminum	3
N232795C	FSPDB1C 175A 1/1 2,5 to 70mm <sup>2</sup>	1x 70mm <sup>2</sup> to 2,5mm <sup>2</sup>	1x 70mm <sup>2</sup> to 2,5mm <sup>2</sup>	Copper	3
Y232804C	FSPDB5A 840A 2/2 25 to 300mm <sup>2</sup>	2x 300mm <sup>2</sup> to 25mm <sup>2</sup>	2x 300mm <sup>2</sup> to 25mm <sup>2</sup>	Aluminum	3
S232799C	FSPDB5C 840A 2/2 25 to 300mm <sup>2</sup>	2x 300mm <sup>2</sup> to 25mm <sup>2</sup>	2x 300mm <sup>2</sup> to 25mm <sup>2</sup>	Copper	3
V232801C	FSPDB2A 175A 1/4 2,5 to 70mm <sup>2</sup>	1x 70mm <sup>2</sup> to 2,5mm <sup>2</sup>	4x 35mm <sup>2</sup> to 2,5mm <sup>2</sup>	Aluminum	3
P232796C	FSPDB2C 175A 1/4 2,5 to 70mm <sup>2</sup>	1x 70mm <sup>2</sup> to 2,5mm <sup>2</sup>	4x 35mm <sup>2</sup> to 2,5mm <sup>2</sup>	Copper	3
VV232802C	FSPDB3A 310A 2/8 2,5 to 35mm <sup>2</sup>	1x 185mm <sup>2</sup> to 16mm <sup>2</sup> to 1x 70mm <sup>2</sup> to 2,5mm <sup>2</sup>	8x 35mm <sup>2</sup> to 2,5mm <sup>2</sup>	Aluminum	3
Q232797C	FSPDB3C 310A 2/8 2,5 to 35mm <sup>2</sup>	1x 185mm <sup>2</sup> to 16mm <sup>2</sup> to 1x 70mm <sup>2</sup> to 2,5mm <sup>2</sup>	8x 35mm <sup>2</sup> to 2,5mm <sup>2</sup>	Copper	3

### Accessories

Reference	Catalog Number	Accessories	Pckg
K233551E	FSCIM1 KITCARD 100 LAB.FSPDB1&2	Labeling accessories for blocks for sizes1&2	5
L233552E	FSCIM2 KITCARD 100 LAB.FSPDB3&5	Labeling accessories for blocks for sizes3&5	5
Z232805J	FSPIN1 PIN MULTIPOLE FSPDB	Multipole assembly accessory	10 (1)
M233553J	FSCAP2 CAP PLUG 35mm <sup>2</sup> FSPDB	Sealing accessories for sizes 70mm <sup>2</sup>	10 (1)
A232806J	FSCAP1 CAP PLUG 35mm <sup>2</sup> FSPDB	Sealing accessories for sizes > 70mm <sup>2</sup>	10 (1)
N233554A	FSEA END ANCHOR FOR FSPDB	Top	1

(1) bag of 10





# Gears & Fuse Gears

## American General Purpose Fuses Power Distribution Blocks 62000 - 69000 Series

### Versatile Power distribution blocks for cable terminations

Ferraz Shawmut Power Distribution Blocks afford a safe, convenient way of splicing cables, splitting primary power into a variety of secondary circuits or providing a fixed junction tap-off point. Power block options include single or dual primary connections with up to 30 secondary connections.



### Features/Benefits

- **Adder Poles:** All series have optional adder poles which snap onto the 1, 2 or 3- pole blocks and lock together to form as many total poles as required. Adder poles with a variety of terminations can be combined to match special wire size combinations.
- **Wire Connectors:** Standard aluminum box connectors accommodate aluminum and copper wire, 1 conductor per opening. Standard copper box connections are for copper wire only, 1 conductor per opening. Connector bars are all 1 piece and tin plated.
- **Insulators:** Insulators are virtually unbreakable, glass-filled polycarbonate on all series. "See-Through" Safety Covers are available which give greater safety and provide Service Entrance ratings for large and intermediate series blocks.

### Ratings

- Ampere ratings from 90 to 1520
- 600V rated

### Approvals



- Most sizes are UL Recognized Component - Guide XCFR2, File E73571
- Most sizes are CSA Certified: Series 62, 63, 66, 68 - Class 6228, File 69363 - Series 67, 69 - Class 3211, File 15469

### Highlights

- Large - 68000 and 69000 Series
- Intermediate - 66000 and 67000 Series
- Mini - 62000 and 63000 Series

### Applications:

- Box, stud and quick-connect terminations for copper and/or aluminum cables.

# Gears & Fuse Gears



## American General Purpose Fuses Power Distribution Blocks 62000 - 69000 Series

### Mini: 62000 - 63000 Series

Sizes, Ratings - Mini Series 62000 and 63000  
Ampere rating based on NEC Table 310-16 for 90° copper wire.  
**ALUMINUM (90° C Cu/Al wire)**

Primary		Secondary		AMP Rating		Catalog Number				Reference Number			
Wire range AWG/kcmil or stud size*	Openings or studs per pole	Wire range AWG/kcmil or stud size*	Openings or studs per pole	CSA	UL	Adder	1 pole	2 pole	3 pole	Adder	1 pole	2 pole	3 pole
#4-14	1	#4-14	1	90	95	63100	63101	63102	63103	E222759	V223279	V201613	L204641
			4			63160	63161	63162	63163	L218004	S218516	B219559	W222015
2/0-#14	1	2/0-#14	1	185	195	63150	63151	63152	63153	L213910	X214426	C215443	G215953
		#2-14	2			63190	63191	63192	63193	D211350	K211862	X212379	J212896
		#4-14	4			63130	63131	63132	63133	W214425	Z214934	F215952	F216458

#### Box to Box

2/0-#14	1	1/4-20 x 5/8	1	185	195	63140	63141	63142	63143	V222014	F222760	K201098	W201614
	1	1/4-20 x 1/2 Tapped hole	1			-	-	-	-	-	-	-	-

#### Stud to Stud

1/4-20 x 5/8	1	1/4-20 x 5/8	1	240	240	-	-	-	-	-	-	-	-
--------------	---	--------------	---	-----	-----	---	---	---	---	---	---	---	---

#### Box to Quick Connect

#4-14	1	1/4 x .032QC	4	90	95	-	-	-	-	-	-	-	-
-------	---	--------------	---	----	----	---	---	---	---	---	---	---	---

### COPPER (90° C Cu wire only)

#### Box to Box

#4-14	1	#4-14	1	90	95	62100	62101	62102	62103	X211344	E211857	D212891	K213403
			4			62160	62161	62162	62163	S201611	E204635	G211859	T212376
2/0-#14	1	2/0-#14	1	185	195	62150	62151	62152	62153	G218000	N218512	X219555	R222011
		#2-14	2			62190	62191	62192	62193	S222012	D222758	H201096	T201612
		#4-14	4			62130	62131	62132	62133	R223276	F201094	D204634	Y211345

#### Box to Stud

2/0-#14	1	1/4-20 x 5/8	1	185	195	62140	62141	62142	62143	G213906	S214422	Y215439	C215949
	1	1/4-20 x 1/2 Tapped hole	1			62170	62171	62172	62173	T214423	X214932	D215950	D216456

#### Stud to Stud

1/4-20 x 5/8	1	1/4-20 x 5/8	1	240	240	62200	62201	62202	62203	H211860	V212377	J213908	V214424
--------------	---	--------------	---	-----	-----	-------	-------	-------	-------	---------	---------	---------	---------

#### Box to Quick Connect

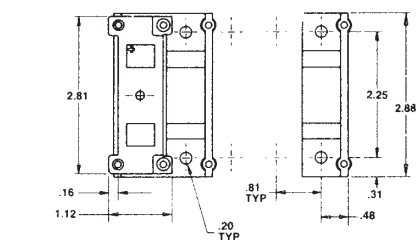
#4-14	1	1/4 x .032QC	4	90	95	62210†	62211†	62212†	62213†	E216457†	Q216973†	J218002†	Q218514†
-------	---	--------------	---	----	----	--------	--------	--------	--------	----------	----------	----------	----------

\*Studs are furnished with nuts and washers. Recommended stud torque: (1/4-20) - 72 in. lbs.

†Quick connector, not CSA Certified.

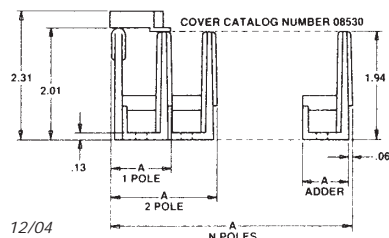
Note: Blocks for 5, 6 and 10 poles are also available. To order, simply modify the Adder catalog number. Example: 63100 becomes 63106 for 6 poles.

### Dimensions - 62000 and 63000 Series SAFETY COVER - Cat. number 08530 Power Distribution Blocks Ref. number F213445



NUMBER OF POLES	DIMENSION A (Inches)
ADDER	.812
1	1.09
2	1.90
3	2.71
N	$(.812 \times N) + .273$

Example for 10 poles:  
 $A = (.812 \times 10) + .273 = 8.39$



12/04



FG67

Polycarbonate safety cover provides dead-front protection to 62000 and 63000 series power distribution blocks. One cover is needed on each pole (1-pole block requires 1 cover, 3-pole requires 3 covers, etc.) Each cover has a test prod hole in the center for circuit checking and each is marked with the reminder "REPLACE AFTER SERVICING EQUIPMENT". To order, simply determine the total number of poles to be protected and specify the same number of 08530 safety covers. Mounting screws are supplied with cover.

Recommended mounting screws for all 62000-63000 series: #10 (.190" diameter).

### END BARRIER - Cat. number U09311 Ref. number Q227507

Polycarbonate end barriers snap on to PDB Adder blocks to form 1-pole blocks. Use one barrier per block.





# Gears & Fuse Gears

## American General Purpose Fuses Power Distribution Blocks 62000 - 69000 Series

Intermediate: 66000 - 67000 Series

Sizes, Ratings – Intermediate Series 66000 and 67000  
Ampere rating based on NEC Table 310-16 for 75° copper wire.



Primary		Secondary		AMP Rating	Aluminium (90°C Cu/AI wire)								
Wire range AWG/kcmil or stud size*	Openings or studs per pole	Wire range AWG/kcmil or stud size*	Openings or studs per pole		Catalog Number				Reference Number				
					Adder	1 pole	2 pole	3 pole	Adder	1 pole	2 pole	3 pole	
<b>Box to Box</b>													
2/0-#14	1	2/0-#14	1	175	67050	67051	67052	67053	Z222731	P223251	E201070	P201585	
		#2-14	4		67570	67571	67572	67573	Q216950	C217467	J217979	Q218491	
		#2-14	6		67560	67561	67562	67563	W214402	X214909	B215419	D215927	
		#2-14	8		67580	67581	67582	67583	H219013	B219536	W221992	E222736	
		#6-14	10		67590	67591	67592	67593	K201075	V201590	C203851	D211327	
		#10-14*	12		67110	67111	67112	67113	R221988	A222732	Q223252	F201071	
350-#6	1	350-#6	1	310	67000	67001	67002	67003	V219530	P221986	Y222730	D201069	
		2/0-#14	2		67010	67011	67012	67013	N201584	X211321	V212354	E212869	
		#2-14	4		67670	67671	67672	67673	W201591	M203860	L211840	A212359	
		#2-14	6		67660	67661	67662	67663	X221993	F222737	W223257	L201076	
		#2-14	8		67630	67631	67632	67633	E215928	H216437	R216951	D217468	
		#6-14	10		67650	67651	67652	67653	K217980	R218492	J219014	C219537	
500-#4	1	#10-14*	15	380	67620	67621	67622	67623	M213888	X214403	Y214910	C215420	
		500-#4	1		67400	67401	67402	67403	M216947	Z217464	F217976	M218488	
		4/0-#6	2		67420	67421	67422	67423	R223253	G201072	R201587	A211324	
		4/0-#10	2		-	-	-	-	-	-	-	-	-
		2/0-#14	4		67410	67411	67412	67413	E219010	Y219533	S221989	B222733	
		#2-14	6		67460	67461	67462	67463	G217977	N218489	F219011	Z219534	
		#2-14	8		67430	67431	67432	67433	G211836	K213886	V214907	Z215417	
		#6-14	10		67480	67481	67482	67483	S201588	A203849	B211325	H211837	
		#10-14*	18		67490	67491	67492	67493	X212356	G212871	Q213385	L213887	
		350-#6	1		-	-	-	-	-	-	-	-	-
2/0-#14	2	& #2-14	3	350	67450	67451	67452	67453	B215925	E216434	N216948	A217465	
		2/0-#14	2		67020	67021	67022	67023	R214398	R214904	W215414	Y215922	
		#2-14	6		67510	67511	67512	67513	V214401	W214908	A215418	C215926	
		#2-14	8		67610	67611	67612	67613	K211839	Z212358	H212872	R213386	
		#6-14	10		67530	67531	67532	67533	P218490	G219012	A219535	V221991	
4/0-#10	2	#10-14*	15	460	67550	67551	67552	67553	B203850	C211326	J211838	Y212357	
		4/0-#10	2		-	-	-	-	-	-	-	-	
4/0-#6	2	4/0-#6	2	460	67520	67521	67522	67523	F216435	P216949	B217466	H217978	
		#2-14	6	460	67540	67541	67542	67543	D222735	T223255	J201074	T201589	
<b>Box to Stud</b>													
350-#6	1	3/8-16 x 1	1	310	67250	67251	67252	67253	T214906	Y215416	A215924	D216433	
500-#4	1	3/8-16 x 1-1/16	1	380	67220	67221	67222	67223	Q201586	Z203848	Z211323	F211835	
		1/4-20 x 1-1/16	2	380	67240	67241	67242	67243	W212355	P213384	J213885	T214400	
<b>Stud to Stud</b>													
1/4-20 x 1-5/16	1	1/4-20 x 1-5/16	1	155	-	-	-	-	-	-	-	-	
3/8-16 x 1-5/16	1	1/4-20 x 1-5/16	1	155	-	-	-	-	-	-	-	-	
		3/8-16 x 1-5/16	1	155	-	-	-	-	-	-	-	-	
3/8-16 x 1-1/8	1	3/8-16 x 1-1/8	1	400	-	-	-	-	-	-	-	-	
		1/4-20 x 1-1/8	2	400	-	-	-	-	-	-	-	-	

\*Copper wire only

Stud-type connectors are furnished with nuts and washers. Recommended stud torque: (1/4-20) - 72 in. lbs; (3/8-16) - 228 in. lbs.

# Gears & Fuse Gears



## American General Purpose Fuses Power Distribution Blocks 62000 - 69000 Series

### Intermediate: 66000 - 67000 Series

Sizes, Ratings – Intermediate Series 66000 and 67000  
Ampere rating based on NEC Table 310-16 for 75° copper wire.



Primary		Secondary		AMP Rating	Copper (75°C Cu wire only)							
Wire range AWG/kcmil or stud size*	Openings or studs per pole	Wire range AWG/kcmil or stud size*	Openings or studs per pole		Catalog Number				Reference Number			
					Adder	1 pole	2 pole	3 pole	Adder	1 pole	2 pole	3 pole
Box to Box												
2/0-#14	1	2/0-#14	1	175	66050	66051	66052	66053	T216424	B216937	N217454	X217968
		#2-14	4		66570	66571	66572	66573	W203845	V211319	D211833	T212353
		#2-14	6		66560	66561	66562	66563	W222728	M223249	B201067	L201582
		#2-14	8		66580	66581	66582	66583	D212868	M213382	F213882	P214396
		#6-14	10		66590	66591	66592	66593	P214902	T215412	W215920	Z216429
		#10-14*	12		66110	66111	66112	66113	D218480	V219001	N219524	H221980
350-#6	1	350-#6	1	310	66000	66001	66002	66003	A216936	M217453	W217967	C218479
		2/0-#14	2		66010	66011	66012	66013	M219523	F221978	F223243	W201062
		#2-14	4		66670	66671	66672	66673	W217461	C217973	J218485	B219007
		#2-14	6		66660	66661	66662	66663	V215413	X215921	A216430	J216944
		#2-14	8		66630	66631	66632	66633	C201068	M201583	X203846	W211320
		#6-14	10		66650	66651	66652	66653	E211834	G213883	Q214397	Q214903
500-#4	1	#10-14*	15	380	66620	66621	66622	66623	T219529	N221985	X222729	N223250
		500-#4	1		66400	66401	66402	66403	C213879	L214393	L214899	Q215409
		4/0-#6	2		-	-	-	-	-	-	-	-
		4/0-#10	2		66420	66421	66422	66423	A217971	F218482	X219003	Q219526
		2/0-#14	4		66410	66411	66412	66413	S215917	X216427	E216940	R217457
		#2-14	6		66460	66461	66462	66463	R212351	B212866	K213380	D213880
		#2-14	8		66430	66431	66432	66433	K221982	T222726	K223247	Z201065
		#6-14	10		66480	66481	66482	66483	Y216428	F216941	S217458	B217972
		#10-14*	18		66490	66491	66492	66493	G218483	Y219004	R219527	L221983
		350-#6	1		-	-	-	-	-	-	-	-
2/0-#14	2	& #2-14	3	350	66450	66451	66452	66453	J201580	H203833	S211317	B211831
		2/0-#14	2		66020	66021	66022	66023	F201577	R203818	N211313	X211827
		#2-14	6		66510	66511	66512	66513	V222727	L223248	A201066	K201581
		#2-14	8		66610	66611	66612	66613	H216943	V217460	H218484	A219006
		#6-14	10		66530	66531	66532	66533	C212867	L213381	E213881	N214395
		#10-14*	15		66550	66551	66552	66553	T217459	Z219005	S219528	M221984
4/0-#10	2	4/10-#10	2	460	66520	66521	66522	66523	J203834	T211318	C211832	S212352
4/0-#6	2	4/0-#6	2	460	-	-	-	-	-	-	-	-
		#2-14	6	460	66540	66541	66542	66543	N214901	S215411	V215919	G216942
Box to Stud												
350-#6	1	3/8-16 x 1	1	310	66250	66251	66252	66253	Z217970	E218481	W219002	P219525
500-#4	1	3/8-16 x 1-1/16	1	380	66220	66221	66222	66223	Z212864	H213378	B213878	K214392
		1/4-20 x 1-1/16	2	380	66240	66241	66242	66243	D216939	Q217456	-	-
Stud to Stud												
1/4-20 x 1-5/16	1	1/4-20 x 1-5/16	1	155	66270	66271	66272	66273	R211316	A211830	Q212350	A212865
3/8-16 x 1-5/16	1	1/4-20 x 1-5/16	1	155	66210	66211	66212	66213	-	Q211315	Z211829	P212349
		3/8-16 x 1-5/16	1	155	66200	66201	66202	66203	R222724	H223245	X201063	H201579
3/8-16 x 1-1/8	1	3/8-16 x 1-1/8	1	400	66260	66261	66262	66263	J221981	S222725	J223246	Y201064
		1/4-20 x 1-1/8	2	400	66230	66231	66232	66233	K214898	P215408	R215916	W216426

\*Copper wire only

Stud-type connectors are furnished with nuts and washers. Recommended stud torque: (1/4-20) - 72 in. lbs; (3/8-16) - 228 in. lbs.

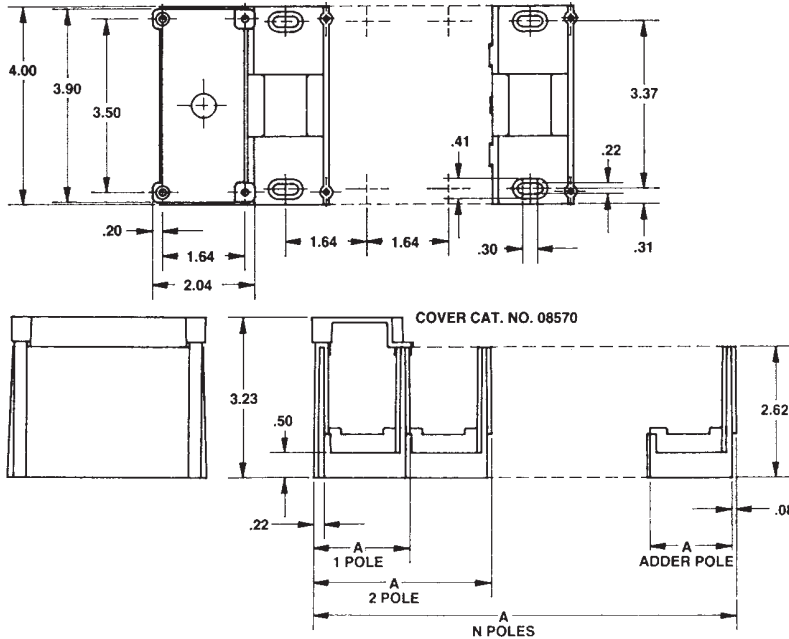


# Gears & Fuse Gears

## American General Purpose Fuses Power Distribution Blocks 62000 - 69000 Series

Intermediate: 66000 - 67000 Series

### Dimensions - 66000 and 67000 Series Power Distribution Blocks



NUMBER OF POLES	DIMENSION A (Inches)
ADDER	1.64
1	1.94
2	3.57
3	5.20
N	$(1.635 \times N) + .30$

Example for 10 poles:  
 $A = (1.635 \times 10) + .30 = 16.65$  inches

### Properties of Materials Used in Power Distribution Blocks

PROPERTY	UNITS	ASTM TEST	POLYCARBONATE
Specific Gravity		D792	1.21
IZOD	ft-lb/in	D256	4-6
Flexural Strength	psi	D790	13,200
Flexural Modulus	psi	D790	325,000
Tensile Strength	psi	D638	9,000
Compressive Strength	psi	D695	12,500
Water Absorption	24 hrs-%	D570	.15
Hardness	Rockwell	D785	M-85
	DuroD	D676	
Dielectric Strength		D149	
	60 hertz, 25°C, s/t		425
	60 hertz, 25°C, s/s		425
Dielectric Constant		D150	
	60Hz-dry		3.01
	1 Mhz-dry		2.96
Volume Resistivity	ohm-cm	D257	$>10^{16}$
Heat Deflecting (°F@264 psi)	°F	D648	270
Flammability (UL 94)			94 V-O

Note: Above data represents approximate values and are for reference only.

#### SAFETY COVER - Catalog number 08570

Polycarbonate safety cover provides dead-front protection to 66000 and 67000 series power distribution blocks. One cover is needed for each pole (1-pole block requires 1 cover, 3-pole requires 3 covers, etc.) Each cover has a test prod hole in the center for circuit checking and each is marked with the reminder "REPLACE AFTER SERVICING EQUIPMENT".

Mounting screws are supplied with cover. To order, simply determine the total number of poles to be protected and specify the same number of 08570 safety covers. Recommended mounting screws for all 66000-67000 series: #10 (.190 diameter).

#### END BARRIER - Catalog number U09705

Polycarbonate end barriers snap on to PDB Adder blocks to form 1-pole blocks. Use one barrier per block.

# Gears & Fuse Gears



## American General Purpose Fuses Power Distribution Blocks 62000 - 69000 Series

Large: 68000 - 69000 Series

Sizes, Ratings – Large Series 68000 and 69000



Ampere rating based on NEC Table 310-16 for 75° copper wire.

Primary		Secondary		AMP Rating	Aluminum (90°C Cu/AI wire)								
Wire range AWG/kcmil or stud size*	Openings or studs per pole	Wire range AWG/kcmil or stud size*	Openings or studs per pole		Catalog Number				Reference Number				
					Adder	1 pole	2 pole	3 pole	Adder	1 pole	2 pole	3 pole	
350-#6	1	2/0-#14	6	310	69170	69171	69172	69173	T222749	X201086	H201602	G203970	
		#4-14	12		69150	69151	69152	69153	T216447	D216962	Q217479	X217991	
		#10-14*	20		69630**	69631**	69632**	69633**	Y216451**	H216966**	V217483**	B217995**	
500-#4	1	500-#4	1	380	69050	69051	69052	69053	B216960	N217477	V217989	V219024	
		350-#6	2		69060	69061	69062	69063	R222747	G223267	V201084	F201600	
		4/0-#6	4		69510**	69511**	69512**	69513**	S215434**	W215943**	X216450**	G216965**	
		4/0-#10	4		-	-	-	-	-	-	-	-	-
		2/0-#14	6		69070	69071	69072	69073	P203931	P211337	V211848	J212367	
		#4-14	12		69080	69081	69082	69083	T212882	B213395	Z213899	J214414	
600-#2	1	600-#2	1	420	69640	69641	69642	69643	H218507	B219030	L222006	Y222753	
1000-250	1	1000-250	1	545	69000	69001	69002	69003	A216959	M217476	T217988	B218501	
		500-#4	2		69010	69011	69012	69013	T219023	M219546	E222000	Q222746	
		350-#6	2		69020	69021	69022	69023	F223266	T201083	E201599	N203930	
		4/0-#6	4		69300**	69301**	69302**	69303**	S217481**	Z217993**	F218505**	Z219028**	
		4/0-#10	4		-	-	-	-	-	-	-	-	-
		2/0-#14	6		69030	69031	69032	69033	N211336	T211847	S212881	Y213898	
		#2-14	10		69530**	69531**	69532**	69533**	A217994**	G218506**	A219029**	S219551**	
#4-14	12	69040	69041	69042	69043	H214413	J214920	M215429	Q215938				
#4-14	2	#4-14	12	170	69180	69181	69182	69183	R211339	X211850	W212884	D213397	
2/0-#14	2	#4-14	12	350	69160	69161	69162	69163	D218503	X219026	P219548	G222002	
		#10-14*	20	69600	69601	69602	69603	Z212887	Q214926	T215435	X215944		
350-#6	2	350-#6	2	620	69120	69121	69122	69123	W201085	G201601	D203944	Q211338	
		4/0-#6	4		69320**	69321**	69322**	69323**	Z201088**	K201604**	G203993**	S211340**	
		4/0-#10	4		-	-	-	-	-	-	-	-	-
		2/0-#14	6		69130	69131	69132	69133	W211849	K212368	V212883	C213396	
		#4-14	12		69140	69141	69142	69143	K214415	L214922	P215431	S215940	
500-#4	2	500-#4	2	760	69090	69091	69092	69093	K214921	N215430	R215939	C216961	
		4/0-#6	4		69310	69311	69312	69313	R219550	J222004	W222751	K223270	
		4/0-#10	4		-	-	-	-	-	-	-	-	-
		2/0-#14	6		69100	69101	69102	69103	P217478	W217990	C218502	W219025	
600-#2	2	#4-14	12	840	69110	69111	69112	69113	N219547	F222001	S222748	H223268	
		600-#2	2		69650	69651	69652	69653	M223272	B201090	M201606	G204614	
1000-250	2	#14-4 & 3/0-#10	4	1090	69540	69541	69542	69543	K222005	X222752	L223271	A201089	
500-#4	4	500-#4	4	1520	-	69561**†	-	-	-	A211853**†	-	-	
		#6-14	30		-	69191**†	-	-	-	A213900**†	-	-	
		#6-14 & 2/0-#14	22		-	69521**†	-	-	-	T217482**†	-	-	

\*Copper wire only

\*\*Not UL Recognized or CSA Certified

†These 1 pole blocks are double width (5.31")



# Gears & Fuse Gears

## American General Purpose Fuses Power Distribution Blocks 62000 - 69000 Series

Large: 68000 - 69000 Series

Sizes, Ratings – Large Series 68000 and 69000



Ampere rating based on NEC Table 310-16 for 75° copper wire.

Primary		Secondary		AMP Rating	Copper (75°C Cu wire only)								
Wire range AWG/kcmil or stud size*	Openings or studs per pole	Wire range AWG/kcmil or stud size*	Openings or studs per pole		Catalog Number				Reference Number				
					Adder	1 pole	2 pole	3 pole	Adder	1 pole	2 pole	3 pole	
<b>Box to Box</b>													
350-#6	1	2/0-#14	6	310	68170	68171	68172	68173	N212877	X213391	S213893	C214408	
		#4-14	12		68150	68151	68152	68153	G219541	B221997	K222741	A223261	
		#10-14*	20		68630**	68631**	68632**	68633**	-	M211335**	X213897**	G214412**	
500-#4	1	500-#4	1	380	68050	68051	68052	68053	V203867	F211329	N211842	C212361	
		350-#6	2		68060	68061	68062	68063	L212875	V213389	Q213891	A214406	
		4/0-#6	4		-	-	-	-	-	-	-	-	
		4/0-#10	4		68510**	68511**	68512**	68513**	A213394**	W213896**	F214411**	G214918**	
		2/0-#14	6		68080	68071	68072	68073	V216954	F215423	H215931	L216440	
		#4-14	12		68640	68081	68082	68083	H214919	G217471	N217983	V218495	
600-#2	1	600-#2	1	420	68640	68641	68642	68643	H214919	L215428	P215937	S216446	
1000-250	1	1000-250	1	545	68000	68001	68002	68003	B212360	K212874	T213388	P213890	
		500-#4	2		68010	68011	68012	68013	Z214405	A214912	E215422	G215930	
		350-#6	2		68020	68021	68022	68023	K216439	T216953	F217470	M217982	
		4/0-#6	4		-	-	-	-	-	-	-	-	
		4/0-#10	4		68300**	68301**	68302**	68303**	Z213393**	V213895**	E214410**	F214917**	
		2/0-#14	6		68030	68031	68032	68033	T218494	L219016	E219539	Z221995	
		#2-14	10		68530**	68531**	68532**	68533**	-	N215936**	R216445**	Z216958**	
#4-14	12	68040	68041	68042	68043	H222739	Y223259	N201078	Y201593				
#4-14	2	#4-14	12	170	68180	68181	68182	68183	D214915	H215425	K215933	N216442	
2/0-#14	2	#4-14	12	350	68160	68160	68162	68163	A201595	A201595	H211331	E212363	
		#10-14*	20		68600	68601	68602	68603	E223265	S201082	D201598	Q203909	
		350-#6	2		68120	68121	68122	68123	W213390	R213892	B214407	C214914	
350-#6	2	4/0-#6	4	620	-	-	-	-	-	-	-	-	
		4/0-#10	4		68320**	68321**	68322**	68323**	R219021**	K219544**	C221998**	N222744**	
		2/0-#14	6		68130	68131	68132	68133	G215424	J215932	M216441	W216955	
		#4-14	12		68140	68141	68142	68143	H217472	P217984	W218496	N219018	
		500-#4	2		68090	68091	68092	68093	M219017	F219540	A221996	J222740	
500-#4	2	4/0-#6	4	760	-	-	-	-	-	-	-	-	
		4/0-#10	4		68310	68311	68312	68313	M215935	Q216444	Z201594	K217474	
		2/0-#14	6		68100	68101	68102	68103	Z223260	P201079	Z201594	Y203870	
		#4-14	12		68110	68111	68112	68113	G211330	P211843	D212362	M212876	
600-#2	2	600-#2	2	840	-	-	-	-	-	-	-		
1000-250	2	#14-4 & 3/0-#10	4		68540**	68541**	68542**	68543**	-	L217475**	S217987**	A218500**	
		500-#4	4		-	68561**†	-	-	-	S219022**†	-	-	
500-#4	4	#6-14	30	1520	-	68191**†	-	-	-	X218497**†	-	-	
		#6-14 & 2/0-#14	22		-	68521**†	-	-	-	-	K215427**†	-	-
		2/0-#14	4		-	68521**†	-	-	-	-	-	-	-

\*Copper wire only

\*\*Not UL Recognized or CSA Certified

†These 1 pole blocks are double width (5.31")



# Gears & Fuse Gears



## American General Purpose Fuses Power Distribution Blocks 62000 - 69000 Series

### Large: 68000 - 69000 Series

Sizes, Ratings - Large Series 68000 and 69000 (continued)  
Ampere rating based on NEC Table 310-16 for 75° copper wire  
**ALUMINUM (90° C Cu/Al wire)**



Primary		Secondary		AMP Rating	Copper (75°C Cu wire only)							
Wire range AWG/kcmil or stud size*	Openings or studs per pole	Wire range AWG/kcmil or stud size*	Openings or studs per pole		Catalog Number				Reference Number			
					Adder	1 pole	2 pole	3 pole	Adder	1 pole	2 pole	3 pole
<b>Box to Stud</b>												
500-#4	1	3/8-16 x 1	2	Cu 380	69210	69211	69212	69213	L214416	M214923	Q215432	T215941
1000-250	1	1/2-13 x 1-3/16	1	Al 310	69270	69271	69272	69273	J201603	Q203978	Y211851	L212369
		3/8-16 x 1	2	Al 445	69240	69241	69242	69243	Y217992	E218504	Y219027	Q219549
		2/0-#14	4	545	69260	69261	69262	69263	H222003	V222750	J223269	Y201087
		#4-14	12	545	69290	69291	69292	69293	R215433	V215942	W216449	F216964
1/2-13 x 1	1	2/0-#14	4	1000	-	-	-	-	-	-	-	-
		#4-14	12	1000	-	-	-	-	-	-	-	-

#### Stud to Stud

1/2-13 x 1-3/8	1	1/2-13 x 1-3/8	1	400	-	-	-	-	-	-	-	-
----------------	---	----------------	---	-----	---	---	---	---	---	---	---	---

### COPPER (75° C Cu wire only)

#### Box to Stud

500-#4	1	3/8-16 x 1	2	Cu 380	68210	68211	68212	68213	W203891	J211332	Q211844	F212364
1000-250	1	1/2-13 x 1-3/16	1	Al 310	68270	68271	68272	68273	Y218498	Q219020	J219543	M222743
		3/8-16 x 1	2	Al 445	68280	68281	68282	68283	C223263	Q201080	B201596	N203907
		2/0-#14	4	545	68240	68241	68242	68243	P212878	Y213392	T213894	D214409
		#4-14	12	545	-	-	-	-	-	-	-	-
1/2-13 x 1	1	2/0-#14	4	1000	68260	68261	68262	68263	P216443	X216956	J217473	Q217985
		#4-14	12	1000	68290	68291	68292	68293	K211333	R211845	G212365	Q212879

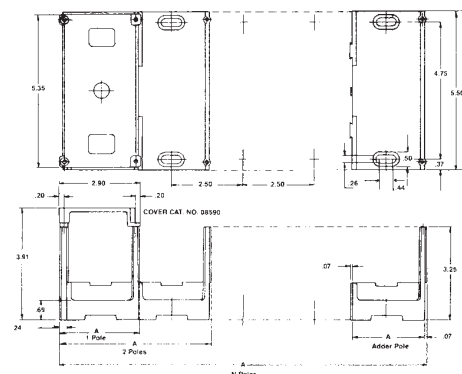
#### Stud to Stud

1/2-13 x 1-3/8	1	1/2-13 x 1-3/8	1	400	68200**	68201**	68202**	68203**	P219019**	H219542**	L222742**	B223262**
----------------	---	----------------	---	-----	---------	---------	---------	---------	-----------	-----------	-----------	-----------

\*Stud type connectors are furnished with nuts and washers. Recommended stud torque: (3/8-16) - 228 in. lbs; (1/2-13) - 496 in. lbs.

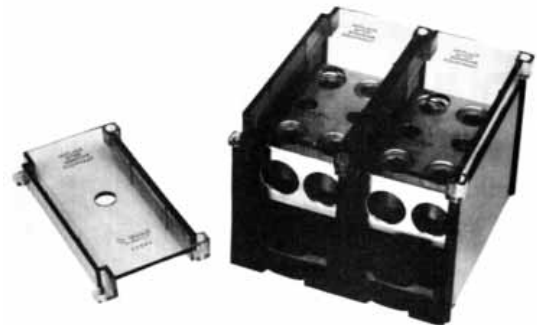
\*\*Not UL Recognized or CSA Certified

### Dimensions 68000 and 69000 Series PDB



NUMBER OF POLES	DIMENSION A (Inches)
ADDER	2.50
1	2.81
2	5.31
3	7.81
N	(2.50 x N) + .31

Example for 10 poles:  
A = (2.50 x 10) + .31 = 25.31



08590 cover and 69092 PDB with 2-08590 covers installed

#### SAFETY COVER - Catalog number 08590

Polycarbonate safety cover provides dead-front protection to 68000 and 69000 series power distribution blocks. One cover is needed for each pole (1-pole block requires 1 cover, 3-pole requires 3 covers, etc.) Each cover has a test prod hole in the center for circuit checking and each is marked with the reminder "REPLACE AFTER SERVICING EQUIPMENT". Mounting screws are supplied with cover.

To order, simply determine the total number of poles to be protected and specify the same number of 08590 safety covers.

Recommended mounting screws for all 68000-69000 series: 1/4" (.250 dia.).

#### END BARRIER - Catalog number U09911

Polycarbonate end barriers snap on to PDB Adder blocks to form 1-pole blocks. Use one barrier per block.