

Miniature Fuses Panel Mount Fuseholders GPM Series



GPM PANEL MOUNT FUSE HOLDERS

Ferraz Shawmut GPM Panel Mount Fuse Holders are in sizes to accommodate 5mm x 20mm, 1/4" x 1-1/4", Class CC and Midget (1-1/2" x 13/32") fuses. All 30A holders have glass-filled polyester insulators for extra dependability and trouble-free installation. Patented design allows same body to accept screw or bayonet knob. Flange design allows front or rear mounting. The 10A and 15A holders are for front mounting only.

Approvals



- GPM-A, GPM-G: UL Recognized, Guide IZLT2, File E118864
CSA Certified, Class 908501, File AP82191
- All others: UL Recognized, Guide IZLT2, File E52283
CSA Certified, Class 6225, File 32169

Recommended Fuse Usage

GPM Fuse Holders will accommodate these Ferraz Shawmut fuses:

- GPM-A: GGM, GGA, GSC
- GPM-G: GSA, GDG, GGC, GSB, GDG, GAB
- GPM-SRR, GPM-BRR, GPM-WTR: ATQR, ATDR, ATMR
- GPM-SRR90, GPM-BRR90, GPM-WTR90: ATQR, ATDR, ATMR
- GPM-S, GPM-B, GPM-WT: } ATQ, ATM, TRM, OTM, GGU,
- GPM-S90, GPM-B90, GPM-WT90: } A13X-2, A25Z-2, A60Q-2, A6Y-2B

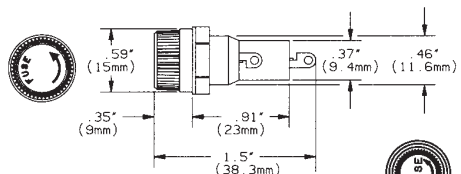


Figure 1

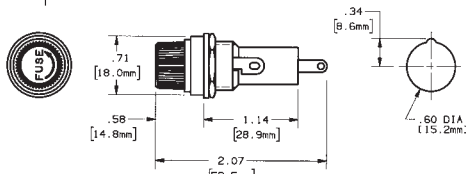


Figure 2

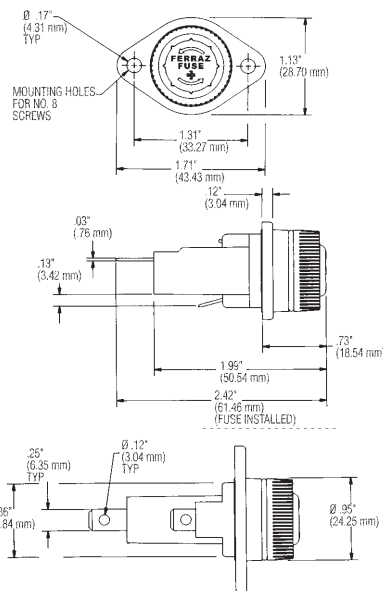


Figure 3

Catalog Numbers & Descriptions

Cat No.	Ref. No.	Fig.	Cap Type	Amps	Volts	Fuse Type	Terminal Type
GPM-A	M213451	1	Screw Knob	10	250	5mm x 20mm	Solder
GPM-G	G213952	2	Screw Knob	15	250	1/4" x 1-1/4"	Solder
GPM-S	M216487	3	Screw Knob	30	600	1-1/2" x 13/32"	1/4" Quick-connect/Solder
GPM-S90		4	Screw Knob	30	600	1-1/2" x 13/32"	1/4" Quick-connect/Solder, Right Angle
GPM-SRR	A217005	3	Screw Knob	30	600	Class CC	1/4" Quick-connect/Solder
GPM-SRR90		4	Screw Knob	30	600	Class CC	1/4" Quick-connect/Solder, Right Angle
GPM-B	L215474	3	1/4 Turn Bayonet Knob	30	600	1-1/2" x 13/32"	1/4" Quick-connect/Solder
GPM-B90		4	1/4 Turn Bayonet Knob	30	600	1-1/2" x 13/32"	1/4" Quick-connect/Solder, Right Angle
GPM-BRR	P215983	3	1/4 Turn Bayonet Knob	30	600	Class CC	1/4" Quick-connect/Solder
GPM-BRR90		4	1/4 Turn Bayonet Knob	30	600	Class CC	1/4" Quick-connect/Solder, Right Angle
GPM-WT	K217520	3	Water-tight Screw Knob	30	600	1-1/2" x 13/32"	1/4" Quick-connect/Solder
GPM-WT90		4	Water-tight Screw Knob	30	600	1-1/2" x 13/32"	1/4" Quick-connect/Solder, Right Angle
GPM-WTR	V218035	3	Water-tight Screw Knob	30	600	Class CC	1/4" Quick-connect/Solder
GPM-WTR90		4	Water-tight Screw Knob	30	600	Class CC	1/4" Quick-connect/Solder, Right Angle

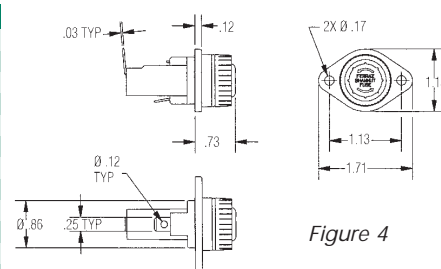


Figure 4