



Gears & Fuse Gears

American General Purpose Fuses Cylindrical & Blade Fuse Blocks DFC Covers for Cylindrical Fuses



DFC DEAD-FRONT FUSE COVERS

Ferraz Shawmut DFC Dead-Front Fuse Covers snap on to individual fuses installed in fuse blocks, covering exposed live clips and terminals and reducing accidental contact by personnel. They are sized to fit Class G, H, J, K, R, CC or Midget fuses for increased safety and (optional) open-fuse indication. All DFC Dead-Front Fuse Covers are reusable when a fuse is replaced – simply detach from the open fuse and re-attach to the new replacement fuse. On indicator models an orange indicator light will illuminate to indicate an open fuse. DFC Fuse Cover ends can be easily cut to accommodate existing wiring, safety switches or special installations. A blank label is provided with each DFC to write in circuit or fuse information.

ply detach from the open fuse and re-attach to the new replacement fuse. On indicator models an orange indicator light will illuminate to indicate an open fuse. DFC Fuse Cover ends can be easily cut to accommodate existing wiring, safety switches or special installations. A blank label is provided with each DFC to write in circuit or fuse information.

Features / Benefits

- Innovative design provides dead-front electrical safety to personnel
- Optional orange indicator light shows open fuse
- Many sizes to fit virtually all popular fuses/fuse blocks
- Reusable with no changes or additional cost
- Labels provided for write-in identification
- Thermoplastic flammability rating of UL 94-V2
- Low leakage current <0.6 mA at 600V

Ratings

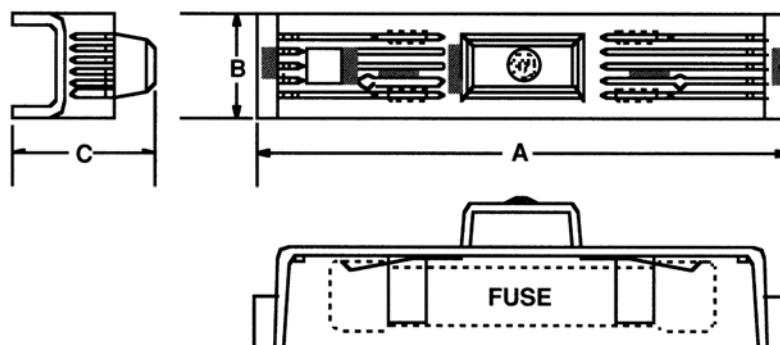
- Fit fuses rated 0 to 100A
- Indicating: 90 to 600VAC, 115 to 600VDC
- Non-Indicating: 0 to 600V AC/DC

Approvals

- UL Listed (All except Midget size) Guide JDVS, File E90426
- UL Recognized Component (Midget) Guide JDVS2, File E90426
- CSA Certified Class 6228, File 70159



Reference Numbers – Descriptions – Dimensions



Gears & Fuse Gears



American General Purpose Fuses Cylindrical & Blade Fuse Blocks DFC Covers for Cylindrical Fuses

DFC DEAD-FRONT FUSE COVERS

Reference Numbers – Descriptions – Dimensions

Catalog Number		Reference Number		Fuses Accomodated			Dimensions		
Indicating	Non-indicating	Indicating	Non-indicating	Amps	Volts	Class	A	B	C
DFC-1I	DFC-1	S222794	J222050	0-30 and 35-60	600 250	J R, K, H	5.02	1.03	1.94
DFC-2I	DFC-2	X201132	G223313	0-30	600	R, K, H	7.03	1.30	2.07
DFC-3I	DFC-3	X205065	G201647	65-100	600	J	7.03	1.30	2.33
DFC-4I	DFC-4	X211896	Q211384	65-100	250	R, K, H	8.20	1.30	2.18
DFC-5I	DFC-5	R212926	J212413	35-60	600	R, K, H	8.20	1.30	2.18
DFC-6I	DFC-6	A213946	E213444	35-60	600	J	4.98	1.17	2.14
DFC-7I	DFC-7	P214971	N214464	0-30	600	Midget, CC	3.82	0.75	1.72
DFC-8I	DFC-8	W215989	S215480	65-100	600	R, K, H	10.38	1.50	2.33
DFC-9I	DFC-9	G217011	S216492	0-30	250	R, K, H	3.82	0.75	1.72

WARNING: To avoid electrical shock, **TURN POWER OFF** before installing, removing or servicing.

Ferraz Shawmut Fuses and Fuse Blocks for use with DFC

FUSE	FUSE BLOCK	DFC	FUSE	FUSE BLOCK	DFC
AG(0-30)	40xxxG	-7I, -7	A6K65-100R	610xxR	-8I, -8
AJT(0-30)	603xxJ	-1I, -1	A6Y(0-30)-2B	303xx	-7I, -7
AJT(35-60)	606xxJ	-6I, -6	A60Q(0-30)-2	303xx	-7I, -7
AJT(65-100)	610xxJ	-3I, -3	A60X(0-30)-1	603xx	-1I, -1
ATDR(0-30)	303xxR	-7I, -7	A70P(10-30)-1	203xx	-9I, -9
ATM(0-30)	303xx	-7I, -7	GFN(0-30)	303xx	-7I, -7
ATMR(0-30)	303xxR	-7I, -7	GGU(0-30)	303xx	-7I, -7
ATQ(0-30)	303xx	-7I, -7	OT(0-30)	203xx	-9I, -9
ATQR(0-30)	30xxR	-7I, -7	OT(35-60)	206xx	-1I, -1
A13X(1-30)-2	303xx	-7I, -7	OT(65-100)	210xx	-4I, -4
A2D(0-30)R	203xxR	-9I, -9	OTM(0-30)	303xx	-7I, -7
A2D(35-60)R	206xxR	-1I, -1	OTS(0-30)	603xx	-2I, -2
A2D(65-100)R	210xxR	-4I, -4	OTS(35-60)	606xx	-5I, -5
A2K(0-30)R	203xxR	-9I, -9	OTS(65-100)	610xx	-8I, -8
A2K(35-60)R	206xxR	-1I, -1	RF(0-30)	203xx	-9I, -9
A2K(65-100)R	210xxR	-4I, -4	RF(35-60)	206xx	-1I, -1
A2Y(0-30)	203xx	-9I, -9	RF(65-100)	210xx	-4I, -4
A2Y(35-60)	206xx	-1I, -1	RFS(0-30)	603xx	-2I, -2
A2Y(65-100)	210xx	-4I, -4	RFS(35-60)	606xx	-5I, -5
A25X(1-30)-1	203xx	-9I, -9	RFS(65-100)	610xx	-8I, -8
25Z(1-30)-2	303xx	-7I, -7	TR(0-30)R	203xx	-9I, -9
A4J(1-30)	603xxJ	-1I, -1	TR(35-60)R	206xx	-1I, -1
A4J(35-60)	606xxJ	-6I, -6	TR(65-100)R	210xx	-4I, -4
A4J(65-100)	610xxJ	-3I, -3	TRM(0-30)	303xx	-7I, -7
A50P(10-30)	203xx	-9I, -9	TRS(0-30)R	603xxR	-2I, -2
A6D(0-30)R	603xxR	-2I, -2	TRS(35-60)R	606xxR	-5I, -5
A6D(35-60)R	606xxR	-5I, -5	TRS(65-100)R	610xxR	-8I, -8
A6D(65-100)R	610xxR	-8I, -8	TRS(35-60)RDC	606xxR	-5I, -5
A6K(0-30)R	603xxR	-2I, -2	TRS(65-100)RDC	610xxR	-8I, -8
A6K(35-60)R	606xxR	-5I, -5			

Note: DFC Covers fit single pole blocks and each pole of multi-pole blocks.
Ask sales representative for data sheets on DFC trim instructions for safety switches.

WARNING: To avoid electrical shock, **TURN POWER OFF** before installing, removing or servicing.

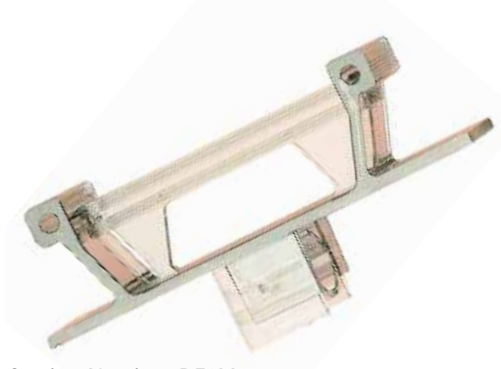


Gears & Fuse Gears

American General Purpose Fuses Cylindrical & Blade Fuse Blocks DFC Covers for Cylindrical Fuses

DFC3M / DFC3LP / DRM

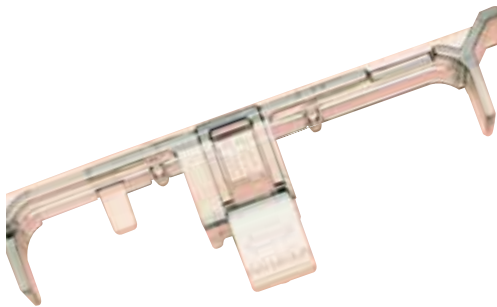
DFC3M safety puller protects personnel, cover live parts.



Catalog Number: DF3M
Reference Number: B218041

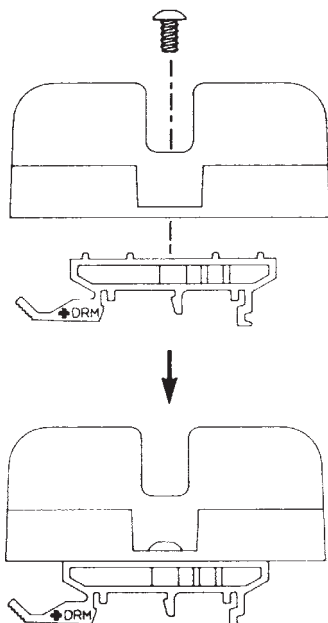
The DFC3M Safety Puller is intended to hold and safely enclose 1-1/2" x 13/32" Midget or Class CC fuses for insertion or removal from fuse clips, making fuse installation easy and safe without the use of a standard fuse puller. The DFC3M is made of clear polycarbonate, so the fuse can be identified when installed in a 303 series fuse block.

DFC3LP safety puller holds fuse, protects personnel and saves space.



Catalog Number: DFC3LP
Reference Number: Q217525

The DFC3LP holds and safely encloses 1-1/2" x 13/32" Midget or Class CC fuse, similar to the DFC3M, but with a lower profile in height so it takes less room where space is restricted. The DFC3LP is made of clear polycarbonate so the fuse can be seen after installation in a fuse block such as the Ferraz Shawmut 303 series.



Catalog Number: DRM
Reference Number: E218550

DRM adapts 303 series midget and class CC fuse blocks to DIN rail.

The DIN rail adapter, DRM, provides quick mounting for all Ferraz Shawmut 303 Series Midget and Class CC fuse blocks to all symmetrical 35mm DIN or asymmetrical 32mm "G" rail. A DRM adapter is attached to each pole with the screw provided. The DRM is molded of black polycarbonate and is mounted or dismounted from the rail simply by depressing the finger pull.